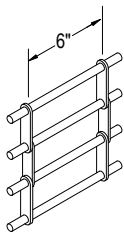


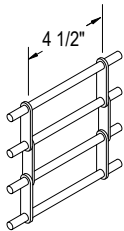
SPECIFICATIONS

MAXIMUM SIZE CURTAIN	20 ft. wide, 8 ft. high, 100 sq. ft. CL9 compact link pattern with 5/16" horizontal aluminum rods on 2" centers, vertical chains formed from single 1/8" aluminum 2-hole links on 9" centers, aluminum spacer tubes between links on every 6th rod, retaining rings on ends of rods
BOTTOM BAR GUIDES	Rectangular aluminum extrusion Aluminum extrusions with polyester pile wear strip, field adjustable lock bar heights
BARREL BRACKETS	4 1/2" min. steel pipe and solid steel shaft with sealed bearing and torsion spring(s) designed for 10,000 operating cycles
HOOD	3/16" steel plates with sealed bearing on operator side and external tension adjustment wheel
OPERATION LOCKS	20 gauge aluminum Push-up to 14 ft. wide, awning crank on larger sizes Single cylinder or guarded thumb-turn on coil side or opposite coil side of bottom bar to activate double throw-bolt lock
FINISH WARRANTY	Mill finish aluminum curtain, clear anodized aluminum bottom bar, guides and hood, shop painted black primer on steel brackets One year limited warranty (excluding finish)

COMMON OPTIONS



CL6 Pattern

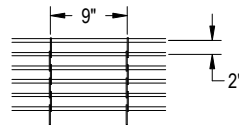


CL4 Pattern

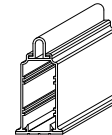
OTHER OPTIONS

- Vinyl bottom seal
- Guide bottom caps
- Cylinder locks on coil side and opposite coil side
- Stainless steel curtain and hood
- Clear, bronze, or color anodized finishes
- Powder coat finish (bottom bar, guides & hood)

CURTAIN & BOTTOM BAR DETAILS

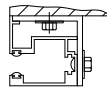


CL9 Compact Link Curtain*

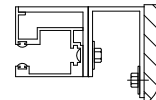


Aluminum Bottom Bar

GUIDE DETAILS

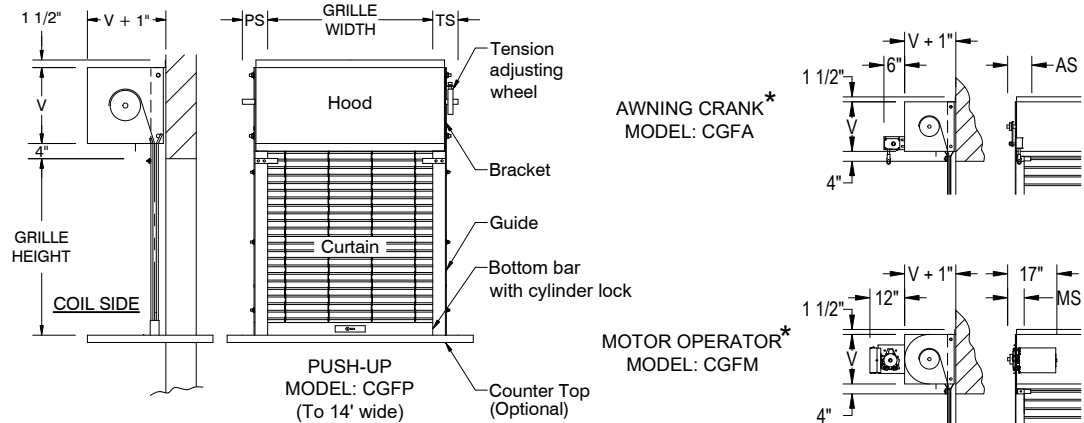


Face Mount



Between Jamb Mount

CLEARANCES (typical face mount grille shown)



PS	AS	MS	TS	TM
5"	5"	5"	5"	5"

Add 3/4" for face of wall mount to masonry jambs.
For between jamb mount, deduct 1/4" from dimensions.
*V for grilles to 4 ft. high is 12"
*V for grilles over 4 ft. high is 15"

GENERAL NOTES:

Clearances are based upon standard door construction. Reduced clearances may be available. Some options may require additional clearance. Drive side shaft may need to be field cut to fit in clearances shown. Shop drawings for specific applications are available. Consult factory for any information not shown.

*Available as an option