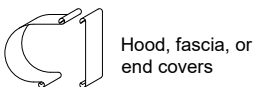


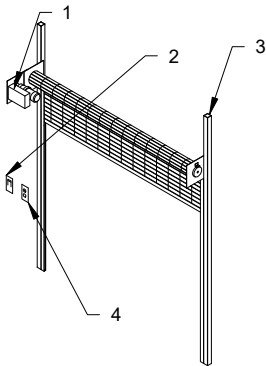
**SPECIFICATIONS**

<b>MAXIMUM SIZE</b>	30 ft. wide, 14 ft. high, 300 sq. ft.
<b>CURTAIN</b>	SL-9 straight link pattern with 5/16" horizontal aluminum rods on 2" centers, vertical chains formed from alternating single 1/8" and double 1/16" aluminum 3-hole links on 9" centers, aluminum spacer tubes on every 10th rod, retaining rings on ends of rods
<b>BOTTOM BAR GUIDES</b>	Rectangular aluminum extrusion, self-leveling up to 1/2"
<b>BARREL BRACKETS</b>	6 5/8" steel pipe and solid steel shaft with sealed bearing and torsion spring(s) designed for 10,000 operating cycles
<b>HOOD OPERATION</b>	24 gauge galvanized steel ( <i>NOT STANDARD - available as an option</i> )
<b>LOCKS</b>	Push-up to 14 ft. wide, 10 ft. high, 120 sq. ft. or chain hoist with cast iron reduction gears available on larger sizes
<b>FINISH</b>	Single cylinder or guarded thumb-turn on coil side and opposite coil side of bottom bar to activate double throw-bolt lock
<b>WARRANTY</b>	Mill finish aluminum curtain, clear anodized aluminum bottom bar and guide channels, shop painted black primer on steel wall angles and brackets One year limited warranty (excluding finish)

**COMMON OPTIONS**



**MALL PACKAGE**

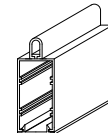
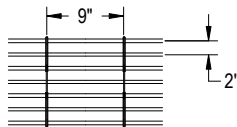


1. Motor operator with internal lock sensor
2. Emergency egress release handle
3. Steel tube supports
4. Two flush mounted keystations

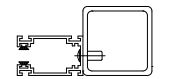
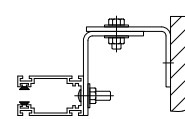
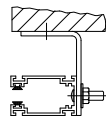
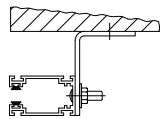
**OTHER OPTIONS**

- Sloping or irregular shaped bottom bars
- Clear, bronze, or other anodized finishes
- Powder coat finish (bottom bar, guides & hood)

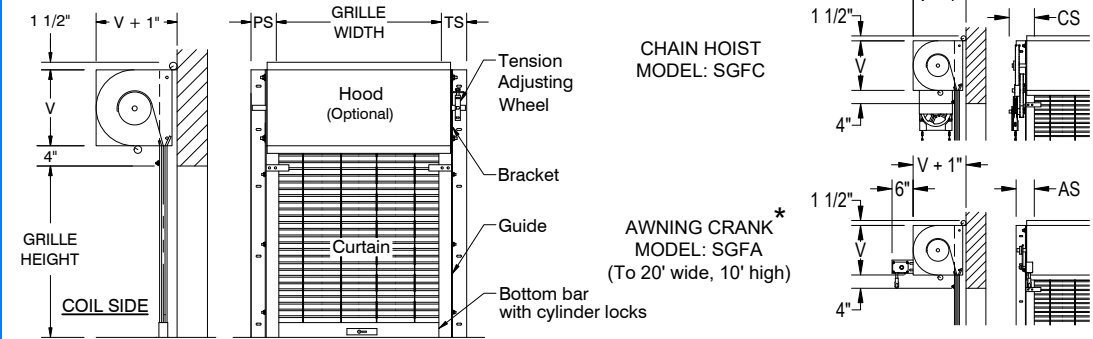
**CURTAIN & BOTTOM BAR DETAILS**



**GUIDE DETAILS**



**CLEARANCES** (typical face mount grille shown)



**PUSH-UP MODEL: SGFP**

Clearances shown are for grilles to 26 ft. wide. Consult factory for clearances on larger grilles

PS#	CS	AS#	MS#	TS#
6"	8"	6"	6"	6"

- # Add 1/2" for tube mount grilles over 20 ft. wide or over 11 ft. high
- 'V' for grilles to 6 ft. high is 15"
- 'V' for grilles over 6 ft. to 11 ft. high is 17"
- 'V' for grilles over 11 ft. high is 19"

**GENERAL NOTES:**

Clearances are based upon standard door construction. Reduced clearances may be available. Some options may require additional clearance. Drive side shaft may need to be field cut to fit in clearances shown. Shop drawings for specific applications are available. Consult factory for any information not shown.

\* Available as an option