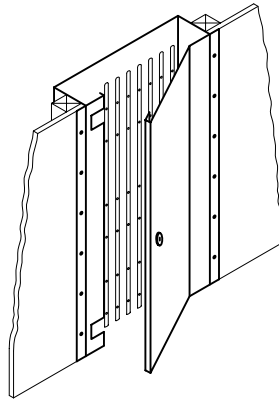
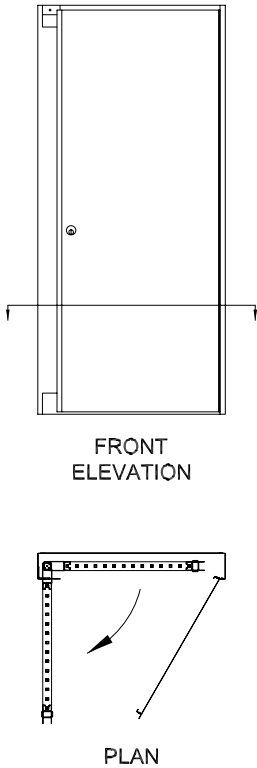
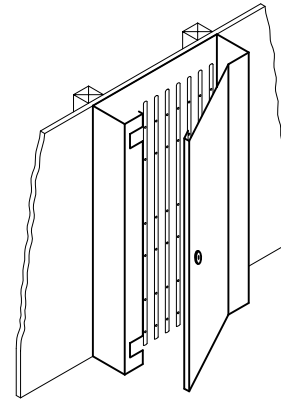


SHALLOW CABINETS

Shallow cabinets are designed for recessed or surface mount conditions to provide storage of the folding gate when not in use. A clean, finished appearance is maintained even when the gate is in use since the cabinet door can be closed after the gate is extended. Cabinet and door are fabricated from 14 gauge steel and include concealed continuous piano-type door hinging, keyed cylinder lock and powder coat finish.



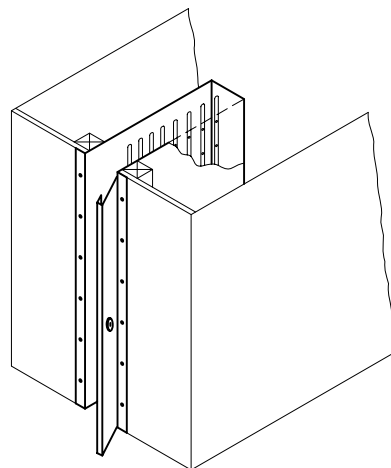
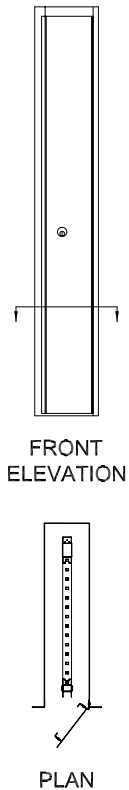
RECESSED MOUNT



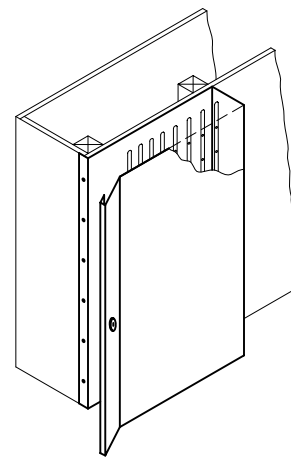
SURFACE MOUNT

DEEP CABINETS

Deep cabinets can be either surface mounted or recessed into a wall to provide storage for a folding gate when not in use. The cabinet door is generally less than 6" wide, but operational restrictions require that it remains open while the gate is in use. Cabinet and door are fabricated from 14 gauge steel and include concealed continuous piano-type door hinging, keyed cylinder lock and powder coat finish.



RECESSED MOUNT



SURFACE MOUNT

