

INSTALLATION INSTRUCTIONS for EG and DC SERIES FOLDING GATES (PIVOTING)

TOP TRACK MOUNTING: **PLAN A** CEILING **PLAN B** FACE

1. FOR CEILING MOUNT: SECURE TOP TRACK TO CEILING (FIG. 1).
2. FOR FACE MOUNT: (FIG. 2)
 - A. DETERMINE LOCATION OF BRACKETS FOR PROPER HEIGHT
 - B. DRILL PILOT HOLE IN WALL FOR BRACKET AT EACH END & INSTALL TRACK BRACKETS
 - C. LOCATE ADDITIONAL TRACK BRACKETS AS REQUIRED & BOLT OR WELD TO TRACK
3. DROP PLUMB LINE FROM CENTER OF PIVOT BRACKET & MARK FLOOR & DRILL 5/8" HOLE 2" DEEP (FIG. 2 & FIG. 3)
4. AFTER DRILLING HOLE, REMOVE TOP PIVOT BRACKET & STAND FOLDED GATE IN VERTICAL POSITION WITH BOTTOM PIVOT PIN IN HOLE.
5. REPLACE TOP PIVOT BRACKET OVER TOP PIVOT PIN & REINSTALL WITH GATE IN PLACE.
6. WHEN INSTALLING BI-PARTING GATES, REPEAT STEPS 3 THRU 5 AT OPPOSITE WALL.
7. IF INSTALLING SINGLE GATE YOU WILL BE INSTALLING A RECEIVER/LOCKING POST ON OPPOSITE WALL. FIRST, DROP A PLUMB LINE 1 IN. FROM END OF TOP TRACK & MARK FLOOR FOR 5/8" HOLE 2" DEEP. THEN STAND LOCKING POST IN HOLE & SLIDE TOP WITH SADDLE UNDER TOP TRACK. BE SURE IT IS PLUMB BEFORE SECURING IN PLACE. FASTEN LOCKING POST TO WALL.
8. AFTER INSTALLING LOCK POST, LOWER DROP TRACK FROM GATE AND PLACE END IN CHANNEL ON LOCKING POST. TO FIT, YOU MAY HAVE TO TRIM EXCESS WITH HACKSAW.
9. IF INSTALLING BI-PARTING GATES, LOWER DROP TRACK WITH RECEIVER CHANNEL TO FLOOR IN LINE WITH DROP TRACK. THEN LOWER OPPOSITE DROP TRACK TO REST IN RECEIVER CHANNEL. TO FIT, YOU MAY HAVE TO TRIM EXCESS WITH HACKSAW.

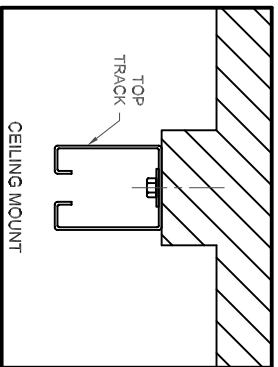
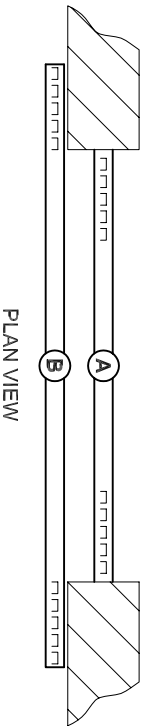


FIG. 1

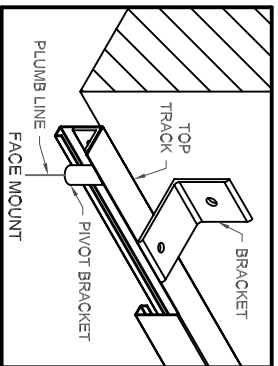


FIG. 2

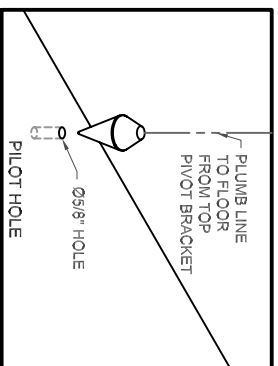
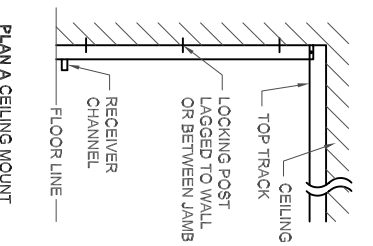
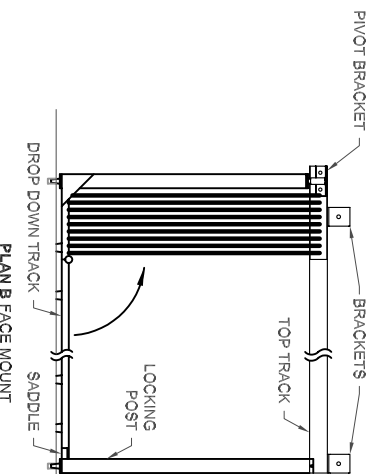


FIG. 3

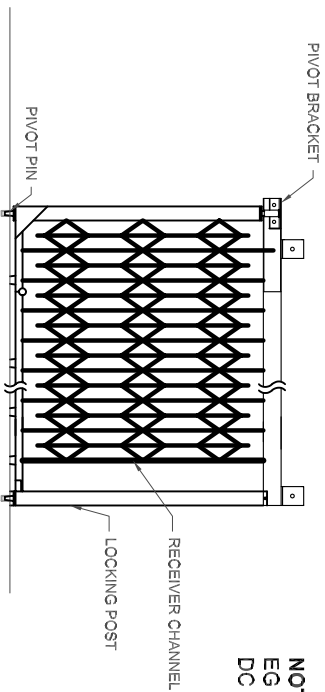


PLAN A CEILING MOUNT



PLAN B FACE MOUNT

END VIEW SHOWING LOCK POST



NOTE:
EG SERIES GATES SHOWN -
DC SERIES GATES SIMILAR

