

SPECIFICATIONS

MAXIMUM SIZE CURTAIN

30 ft. wide, 12 ft. high (consult factory for larger sizes)

Folding 6 1/2" wide extruded aluminum panels interconnected with integral continuous vertical hinges

Model FO - panels divided by vertical aluminum rods and horizontal stiffeners in a 2 5/16" wide, 12" high open pattern

Model FC - panels with clear polycarbonate glazing inserts to provide a closed panel with visibility

Model FS - panels fabricated from solid aluminum

Model FG - horizontal links interconnected with vertical rods in a 3" wide, 12" high pattern

POSTS

Rectangular aluminum extrusion connected to lead and rear panels and intermediately every 10 ft. (and corners as required)

LOCKS

Cylinder activated hook lock in lead post with full height wall strike; cylinder activated bottom throw-bolt lock in receiver

and intermediate posts (when provided) with floor strike; self-locking tailing edge on rear post engages floor & ceiling stop

TOP TRACK

Extruded aluminum, 1 3/4" x 1 5/8" x 1/8" thick with steel connection plate/pins at each splice

ROLLERS

Non-metallic 1 1/8" double-wheeled ball bearing rollers

FINISH

Mill finish (FG), clear anodized (FO, FC, FS) aluminum curtain, posts and top track

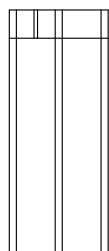
WARRANTY

One year limited warranty (excluding finish)

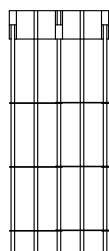
ALTERNATE MODELS



MODEL FC
CLEAR PANEL



MODEL FS
SOLID PANEL



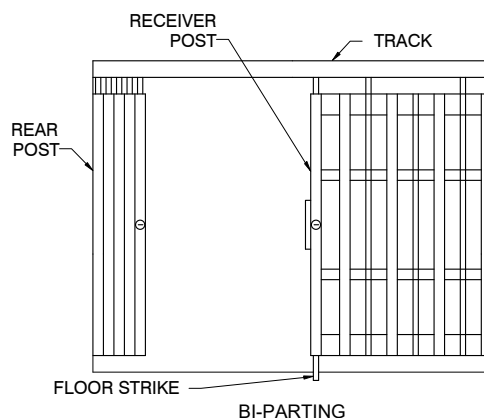
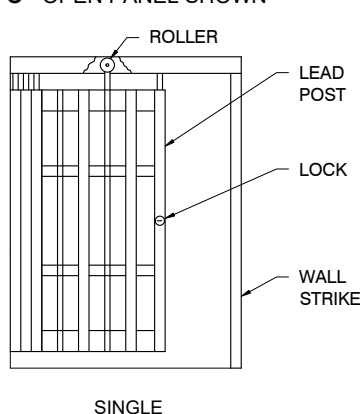
MODEL FG
ROD & LINK

COMMON OPTIONS

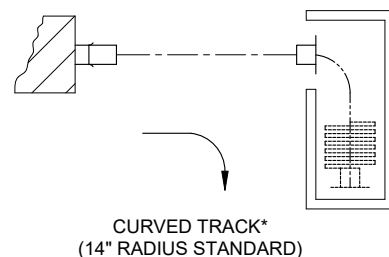
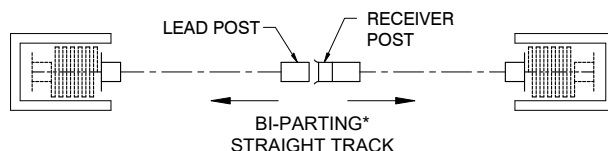
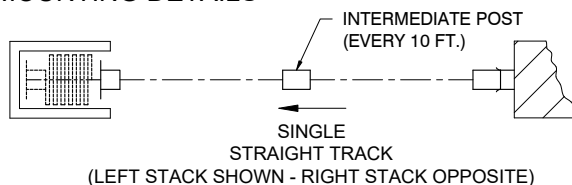
- Clear or bronze anodized finish
- Special cylinders
- Curved tracks
Single or compound curves
90°, 45°, 30° or custom radius

CLOSURE DETAILS

MODEL FO - OPEN PANEL SHOWN



MOUNTING DETAILS

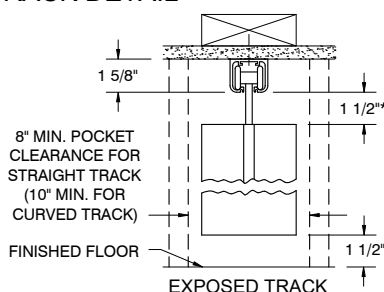


CLEARANCES:

Allow approximately 2" per ft. of width for stacking clearance.

*AVAILABLE AS AN OPTION

TRACK DETAIL

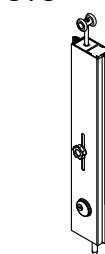


*Hold dimension for recessed track

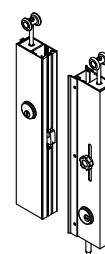
LOCKING POSTS



Lead Post
Hook Lock



Intermediate Post
Bottom Lock



Bi-Parting Post
Hook Lock & Bottom Lock