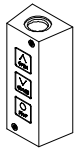
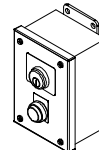


Controls



Push-Button

3-button open-close-stop control, surface or flush mount, interior or exterior enclosures - available with mortise cylinder key lockout (requires a wired connection to the motor operator)



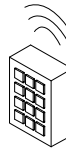
Key Station

Key operated open-close control with stop button, surface or flush mount, interior or exterior enclosures - mortise cylinder available with special keying/cores (requires a wired connection to the motor operator)



Radio Control Transmitter / Receiver

Wireless single or multiple button hand-held transmitter with receiver to open and close the door (requires that the door be provided with a monitored sensing device)



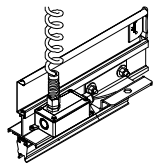
Digital Keypad

Wireless digital keypad transmitter, surface mount, interior/exterior enclosure with receiver - or hard-wired wall/pedestal mount unit - to open and close the door (requires that the door be provided with a monitored sensing device)

Per the requirements of UL Standard 325-2010, door operators must be provided with an actuating device requiring constant pressure to close the door. As an alternative, the door may be provided with a monitored sensing device that will reverse the door upon sensing an obstruction during closing.

Monitored Sensing Devices*

CONTACT TYPE SENSING DEVICE



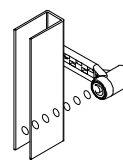
Electric Sensing Edge (A2530L-M / A1525-M)

Extruded rubber dual-chamber profile with integral isolated conductive elastomer switches terminated end-of-line that compress when contacting an obstruction to signal the motor operator to reverse the door (requires a wired connection to the motor operator or a wireless transmitter/receiver system)

NOTES:

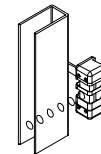
1. The use of multiple monitored devices (sensing edge and photo eye) is recommended to provide a higher level of protection.
2. Photo eyes must be installed 6 inches above the floor when they are the primary monitored sensing device (cannot be the primary device on doors over 35 ft. wide).
3. If a UL325-2010 compliant motor operator detects a fault condition in the monitored sensing system, it causes a closing door to return to the fully open position, and automatically changes to a constant pressure close function to allow temporary operability until the fault condition is repaired.

NON-CONTACT TYPE SENSING DEVICE



Optical Photo Eye Sensor (FOPE)

Emitter/receiver unit at each side of the door senses an obstruction between the optics and signals the motor operator to reverse the door (requires a wired connection to the motor operator from both sides of the door)

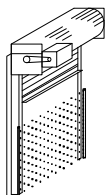


Reflective Photo Eye Sensor (FRPE)

Emitter on one side of the door, reflector on the opposite side, senses an obstruction between them and signals the motor operator to reverse the door (requires a wired connection to the motor operator from the emitter side only)

* A field installed Monitored Sensing Device Adapter is available to allow the use of monitored sensing devices on older operators without a monitoring function (pre-UL325-2010 w/ AC controls)

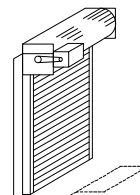
Non-Monitored Sensing Devices



Light Curtain

70" high multi-beam emitter/receiver unit at each side of the door senses an obstruction between the optics and signals the motor operator to reverse the door (requires a wired connection to the motor operator from both sides of the door)

In some cases, a light curtain can be a monitored device

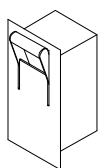


Vehicle Loop Detector

Rectangular shaped in-ground wire loop detects vehicles on or near the loop and signals the motor operator to either open, hold open, close, or reverse the door (requires a wired connection to the motor operator at one side of the door)

Multiple loops can be utilized to provide multiple functions

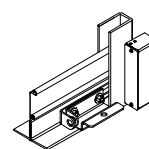
Accessories



Egress Device

Flush mount enclosure with extended handle to activate partial opening of an unlocked grille or closure for emergency exit - available with MGRL and MGH motor operators (requires a mechanical cable connection to the motor operator)

Grille/closure must have springs designed for egress function



Guide Mounted Interlock(s)

Electrical interlock switch mounted to door guide(s) to prevent motor operator from opening door with locks engaged (requires a wired connection to the motor operator from each interlock)

Interlocks are not required on MGRL and FGRL motor operators with internal lock sensors

Modifications

- Extra open/close limit switches
- Audible, visual & voice warning devices
- Battery backup
- Adjustable re-close timer
- Timer defeat switch
- Remote/wall mount control panel
- NEMA 4 (water, oil and dust tight)
- NEMA 4X (corrosion resistant and water, oil, dust tight)
- NEMA 7/9 (hazardous area "explosion proof")

NOTES: All devices - unless shown as being wireless - require connection to the motor operator. Other controls, devices, accessories and modifications may be available.



4525 Littlejohn Street • Baldwin Park, CA 91706
 (626) 869-0837 • Toll Free (866) 939-3399 • Fax (626) 869-0841
 www.lawrencedoors.com

CA-10/16-R1

© 2016 Lawrence Roll-Up Doors, Inc.

Lawrence Roll-Up Doors, Inc. reserves the right to change specifications without notice. Refer to Standard Specifications sheets (available upon request) for complete product information.