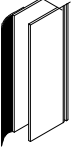
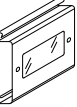
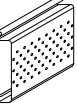

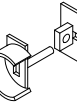
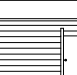


SPECIFICATIONS

MAXIMUM SIZE	20 ft. wide, 16 ft. high
CURTAIN	Interlocking galvanized steel Type 'T' flat slats - 24 gauge to 16 ft. wide, 22 gauge over 16 ft. wide - with endlocks riveted to alternate slats, designed to withstand a 20 PSF windload
BOTTOM BAR GUIDES	T-shape aluminum extrusion to 16 ft. wide, two steel angles over 16 ft. wide, with vinyl weatherstrip
BARREL	Formed 11 gauge steel U-channel guides and 3/16" steel wall angles bolted together and to wall with 3/8" fasteners 24" apart
BRACKETS	4 1/2" min. steel pipe and solid steel shaft with sealed bearing and torsion spring(s) designed for 20,000 operating cycles
HOOD	3/16" min. steel plates with sealed bearing on operator side and external tension adjustment wheel
OPERATION	24 gauge galvanized steel
LOCKS	Push-up to 10 ft. wide and 8 ft. high, chain hoist with cast iron reduction gears on larger sizes
FINISH	Slide locks on coil side of bottom bar
WARRANTY	Baked-on primer and top coat on slats and hood - tan opposite coil side/off-white coil side, or grey both sides - clear anodized aluminum bottom bar, shop painted black primer on steel bottom bar, guides and brackets One year limited warranty (excluding finish)

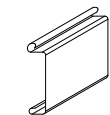
COMMON OPTIONS

-  Vinyl or brush guide weatherstrip
-  Vision windows
-  Ventilated slats-perforated (shown) or fenestrated
-  Vinyl hood weather baffle
-  High security guide mounted lock
-  Pedestrian pass door

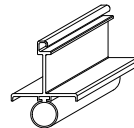
OTHER OPTIONS

- Heavier gauge slats
- Louvered slats
- Tubular bottom bar with cylinder locks
- Sloping or irregular shaped bottom bars
- Galvanized or powder coat finishes

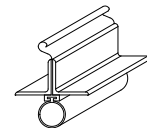
CURTAIN & BOTTOM BAR DETAILS



Type 'T' Flat Slat

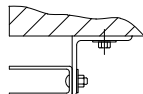


Aluminum Bottom Bar

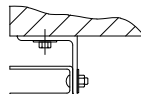


Steel Angle Bottom Bar

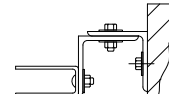
GUIDE DETAILS



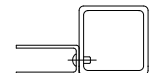
Type 'Z' Guide



Type 'E' Guide

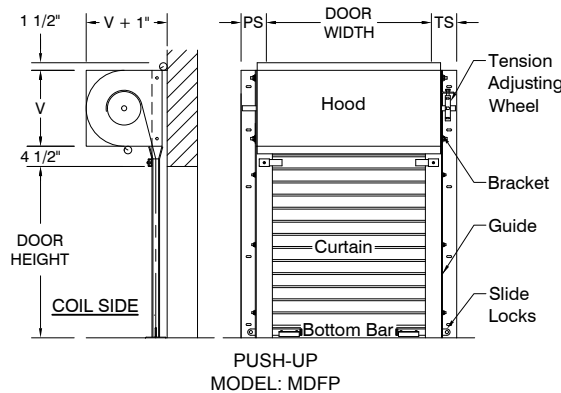


Between Jamb Guide



Tube Mount Guide*

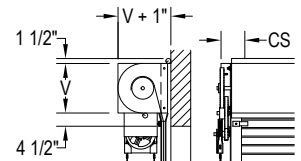
CLEARANCES (typical face mount door shown)



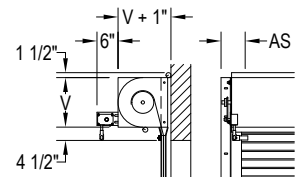
PS	CS	AS	MS	TS
6"	8"	7"	7"	7"

'V' for doors to 11 ft. high is 15"
'V' for doors over 11 ft. high is 17"

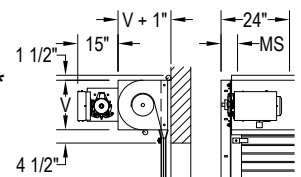
CHAIN HOIST
MODEL: MDFC



AWNING CRANK*
MODEL: MDFA
(To 16' wide, 10' high
150 sq. ft.)



MOTOR OPERATOR*
MODEL: MDFM



GENERAL NOTES:

Clearances are based upon standard door construction. Reduced clearances may be available. Some options may require additional clearance. Shop drawings for specific applications are available. Consult factory for any information not shown.

* Available as an option