

#### GENERAL NOTE:

- The terms “closure” and “closures” apply generally to Side-Folding Closures. If an instruction refers to a specific type, it will be noted as such.

#### OPERATION INSTRUCTIONS



**WARNING!** – A **moving closure** can cause death or serious injury.

- Do NOT reach through or climb on closure
- Open and close closure with caution
- Avoid pinch points
- Operate closure only when area is clear of people and obstructions

**NOTE:** Make sure all locks on all posts are disengaged before operating the closure.

**To open the closure:** Carefully pull the lead post away from the wall strike (on single closures) or receiver post (on bi-parting closures). From as close to mid-height as possible, and keeping the closure as vertical as possible, firmly push the lead post to open the closure until it is fully open and stacked. Repeat this process for bi-parting closures.

#### NOTES:

- 1) *Never force the closure if it doesn't move smoothly. If binding occurs, gently pull the closure back a short distance and then continue to open it. If binding continues, locate the cause of the problem and correct it.*
- 2) *Some closures may be fabricated in separate “floating” sections. Each section will need to be opened separately, starting with the section closest to where the closure is stacked.*
- 3) *Some closures may be provided with a bar or strap attached to the top of the lead post. Pull the bar or strap as horizontally as possible in the open direction to operate the closure.*

**To close the closure:** From as close to mid-height as possible, and keeping the closure as vertical as possible, pull the lead post(s) away from the stacked position until nearly closed. Repeat this process for bi-parting closures. Carefully push the lead post into the wall strike (on single closures) or receiver post (on bi-parting closures). Align and secure all locks.

#### NOTES:

- 1) *Never force the closure if it doesn't move smoothly. If binding occurs, gently push the closure back a short distance and then continue to close it. If binding continues, locate the cause of the problem and correct it.*
- 2) *Some closures may be fabricated in separate “floating” sections. Each section will need to be closed separately.*
- 3) *Some closures may be provided with a bar or strap attached to the top of the lead post. Pull the bar or strap as horizontally as possible in the closed direction to operate the closure.*

## **MAINTENANCE INSTRUCTIONS**

**General:** Keep top tracks, floor strikes, and storage pockets clean and free of debris.

**Lubrication:** Rollers have grease-packed bearings, which should require little or no maintenance in normal applications. If necessary, rollers can be sprayed with a light lubricant (such as “WD-40”). Tracks do not require lubrication, but may be coated with a light lubricant (such as “Slip-it”) to reduce friction.

*The use of heavy oil or grease as a lubricant is not recommended because they are likely to attract dirt and debris that can result in a build-up, and potentially worsen the condition lubrication was supposed to resolve.*

**Inspection:** The necessity for inspections varies greatly depending upon factors such as a closure’s age, exposure to environmental conditions, and frequency of usage. Newer closures operated only occasionally generally justify much less frequent inspection than closures in more frequent usage applications or older closures. Periodically, all closures should be inspected for loose bolts and screws, misaligned or loose rollers and tracks, damaged or missing parts, or other defective conditions. Any defective conditions that are found must be corrected.

**Adjustments and repairs:** If adjustments and repairs become necessary, they must be made by a trained door systems technician using proper tools and instructions.

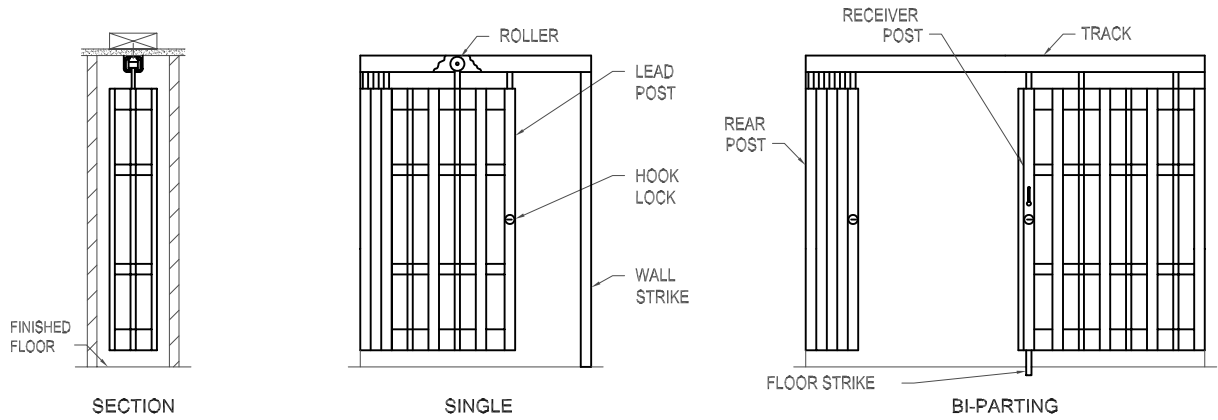
**NOTE:** Sagging, twisted, or misaligned tracks that are not the result of loose bolts or screws could indicate a deficiency in the track supporting structure that should be evaluated and corrected by a general contractor.

**Replacement parts:** Replacement parts are available from Lawrence Roll-Up Doors, Inc. through an authorized dealer and often available from stock.

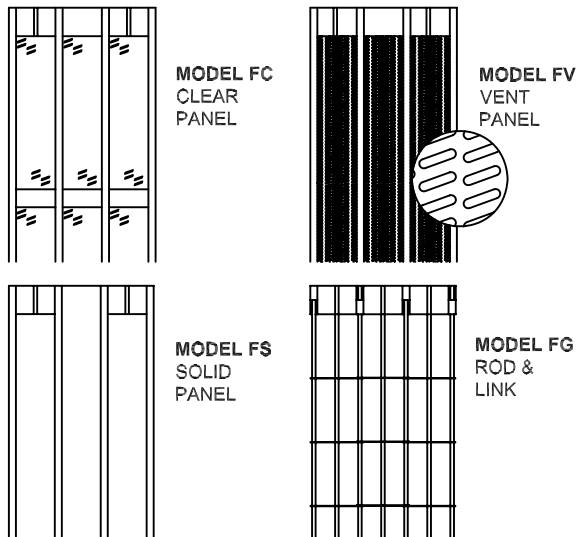
**NOTE:** If excessive wear or damage to any closure component(s) is detected, a trained door systems technician must evaluate the condition and perform all necessary adjustments and repairs.

## CLOSURE DETAILS

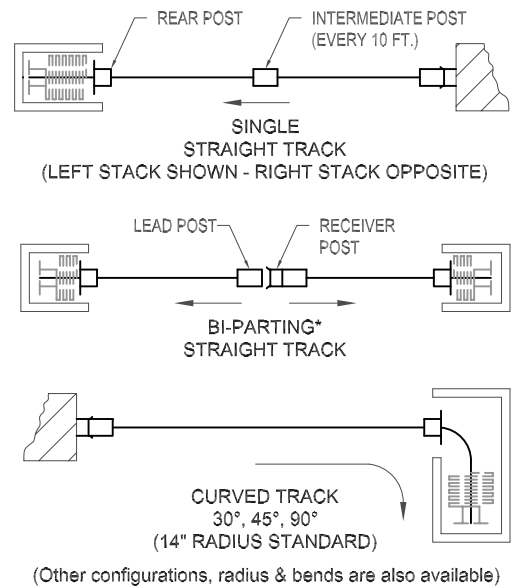
MODEL FO - OPEN PANEL SHOWN



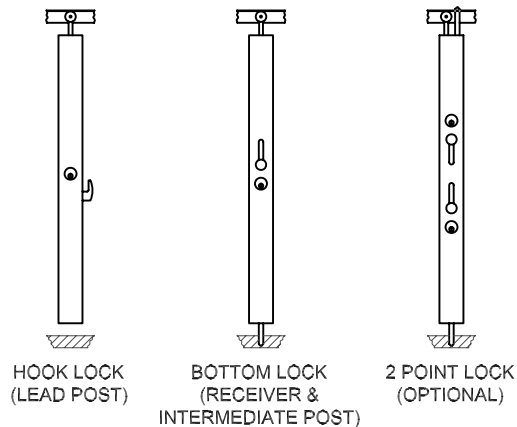
## CURTAIN DETAILS



## MOUNTING DETAILS



## LOCKING DETAILS



## TRACK & ROLLER DETAILS

