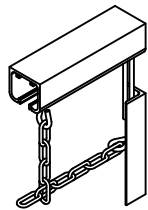


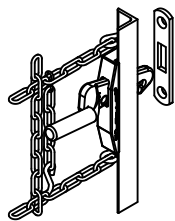
SPECIFICATIONS

MAXIMUM SIZE	24 ft. wide, 12 ft. high
MOUNTING	Face mount (above the header) or between-jamb mount (below the header)
GATE BODY	Square pattern from vertical and horizontal rows of 2/0 link chain, 3/16" thick, on 8" approximate centers (bottom 2 rows are on 4" horizontal centers); body is attached to lead and rear bars with steel rivet hooks; top of gate is fitted with rollers
LEAD & REAR BARS	Steel angles
TOP TRACK	Extruded aluminum, 1 3/4" x 1 5/8" x 1/8" thick with connection plate/pins at each splice
TOP ROLLERS	Non-metallic 1 1/8" double-wheeled ball bearing rollers attached to top of gate body and lead bar to slide through top track
OPERATION	Manual operation
LOCKING	Cast ductile iron housing on lead bar with integral self-latching handle suitable for padlocking, spring loaded push pin on bi-parting gates
FINISH	Zinc plated gate body with gray color prime paint finish on other steel and iron parts, clear anodized top track
WARRANTY	One year limited warranty (excluding finish)

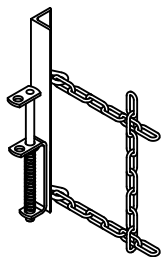
FEATURES



Extruded Aluminum Top Track



Self Latching Locking Device

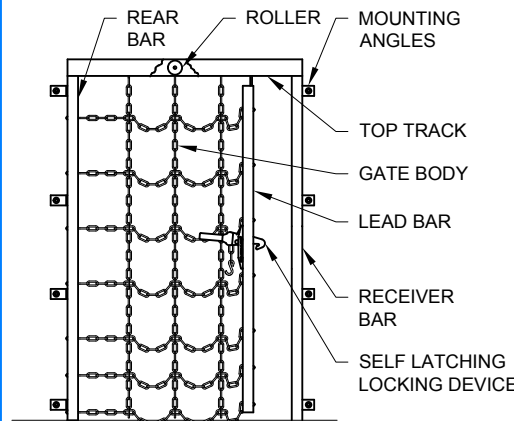


Spring Loaded Push Pin

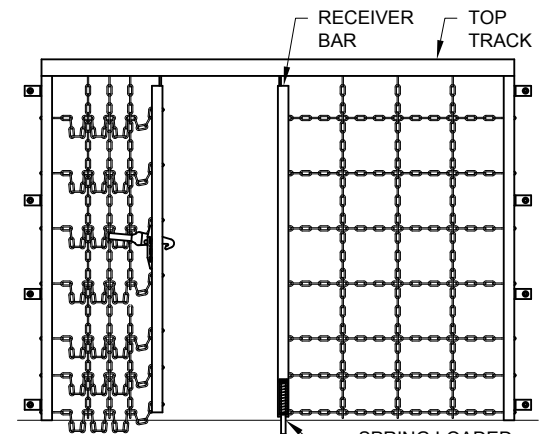
OPTIONS

- Powder Coat Finish Hardware
- Galvanized Finish Hardware
- Mesh or Vinyl Privacy Curtain

GATE DETAILS

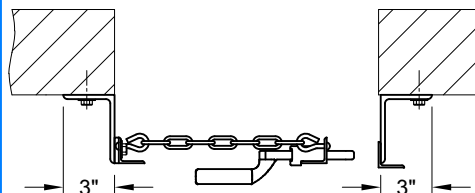


Single

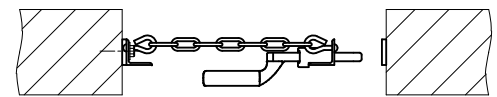


Bi-Parting

JAMB DETAILS



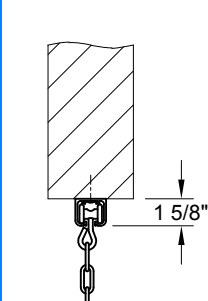
Face Mount



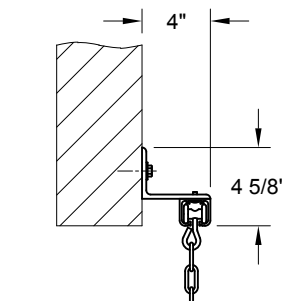
Between-Jamb Mount

CLEARANCES:
Allow approximately 1" per ft. of gate width for stacking clearance.

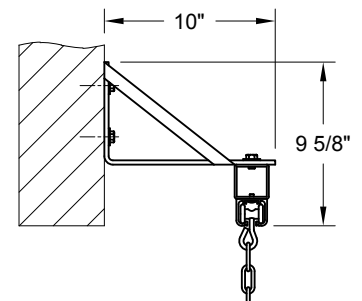
HEAD DETAILS



Below Header Mount



Face Mount Standard Angle Bracket



Face Mount Extended Angle Bracket (Optional for mounting behind roll-up door up to 14' wide)