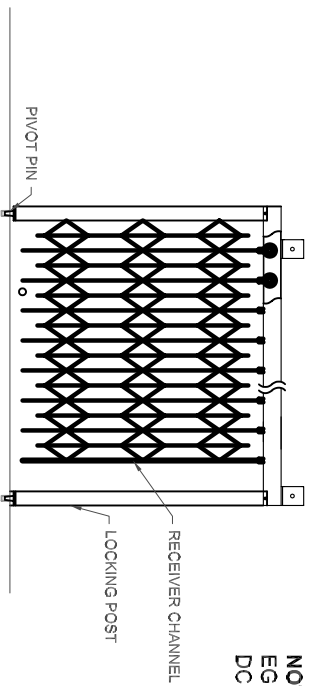
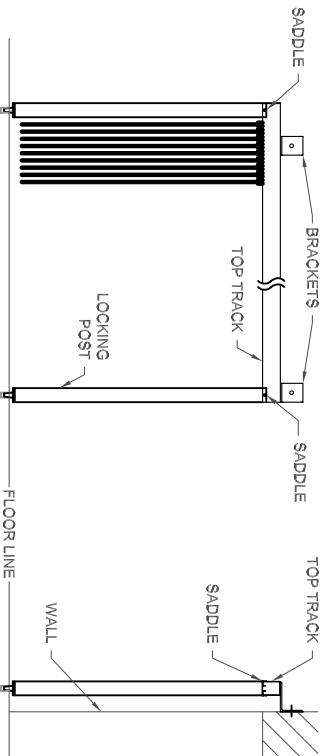
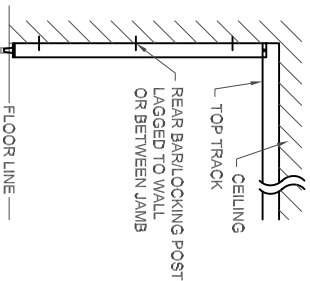
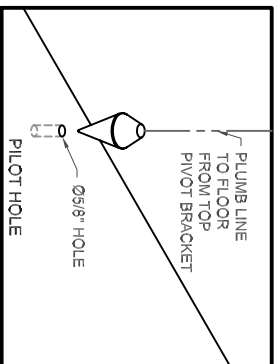
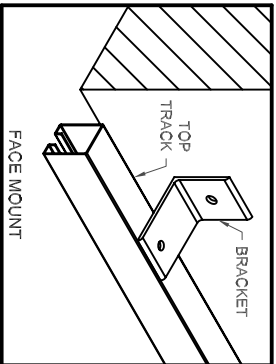
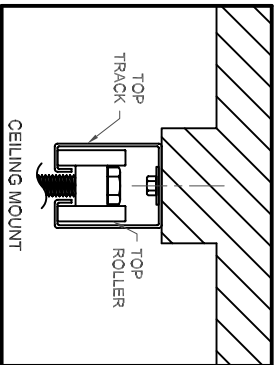
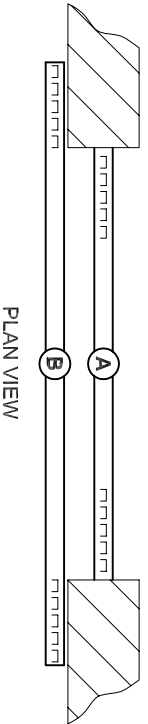


INSTALLATION INSTRUCTIONS for EG and DC SERIES FOLDING GATES (NON-PIVOT)

TOP TRACK MOUNTING: **PLAN A** CEILING **PLAN B** FACE

1. IDENTIFY MOUNTING LOCATION.
2. ATTACH MOUNTING BRACKET FOR THE TOP TRACK ON FACE OF WALL, ASSURING THE TOP OF THE TRACK IS AT THE DESIRED HEIGHT.
3. ATTACH THE TOP TRACK TO THE MOUNTING BRACKETS.
4. AT 1" FROM EACH END OF THE TOP TRACK DROP A PLUMB BOB FROM THE CENTER OF THE TRACK TO THE GROUND LOCATING MOUNTING POSITION FOR THE REAR BAR POST. MARK POSITION.
5. DRILL 5/8" HOLE IN FLOOR ABOUT 2" DEEP AT MARKED POSITION. THIS HOLE WILL ACCEPT THE LOWER MOUNTING PIN. PLACE RACKED (CLOSED) GATE WITH ATTACHED END BAR IN VERTICAL POSITION WITH LOWER MOUNTING PIN INTO ATTACH SADDLE BRACKET ON THE TOP OF THE REAR BAR/LOCKING POST TO THE TOP TRACK.
6. IF GATE IS BI-PARTING, REPEAT STEPS 1 THROUGH 8 ABOVE AND PROCEED TO NEXT STEP.
7. AFTER MOUNTING BOTH SEGMENTS OF THE GATE, PULL THE TWO GATES TOGETHER SO THAT THE LEADING BARS ARE CONNECTED WITH EACH OTHER. A CANE BOLT IS LOCATED ON ONE OF THE LEAD BARS. DROP CANE BOLT TO FLOOR AND MARK LOCATION ON FLOOR.
8. BEFORE DRILLING HOLE CHECK TO INSURE BOTH GATE HALVES OR SECTIONS HAVE APPROXIMATELY THE SAME SPACING.
9. DRILL 7/8" HOLE TO ACCOMMODATE 3/4" CANE BOLT DEEP ENOUGH TO ALIGN PADLOCK HASPS PLUS AN ADDITIONAL INCH FOR ACCUMULATION OF DUST AND/OR DEBRIS.
10. CLEAN UP AREA AND USE TOUCH UP PAINT AS NECESSARY ON GATE BODY, FASTENERS ETC.



NOTE:
EG SERIES GATES SHOWN -
DC SERIES GATES SIMILAR

