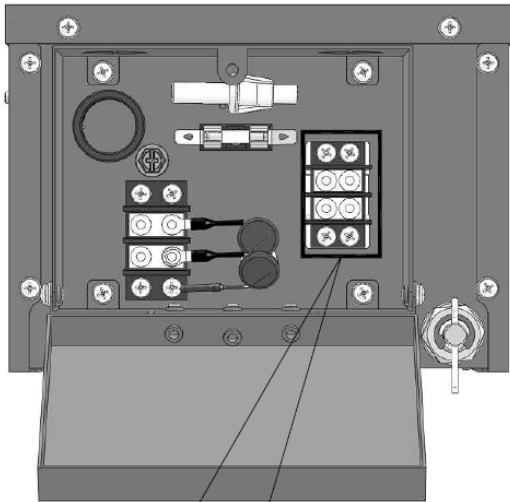


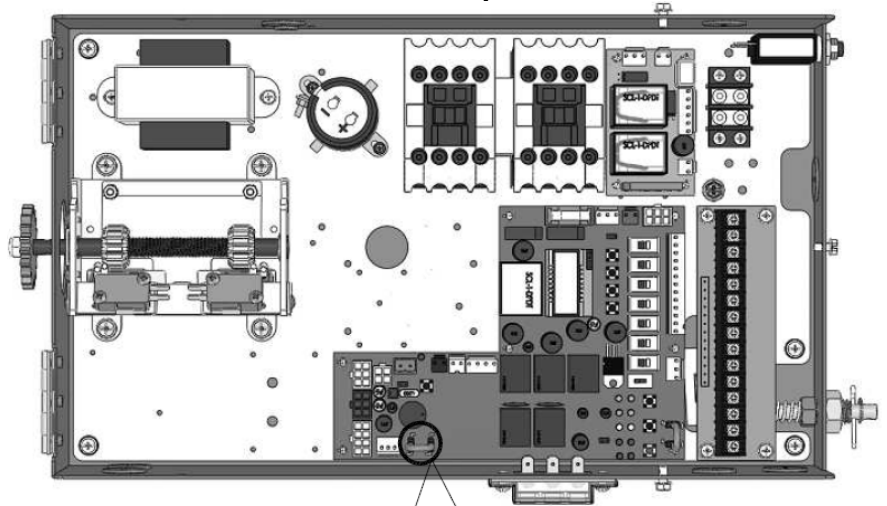
For Automatically Closing Fire Doors

Install Test Switch and Connect as Shown Below

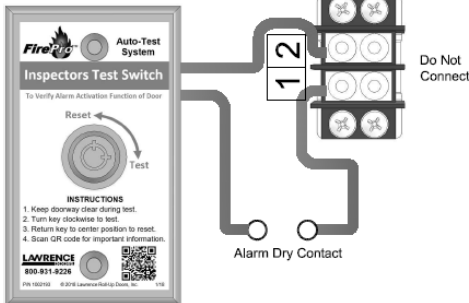
Model AR-C Auto-Reset Conversion Module



Model FS & FSML Auto-Reset Fire Door Operator

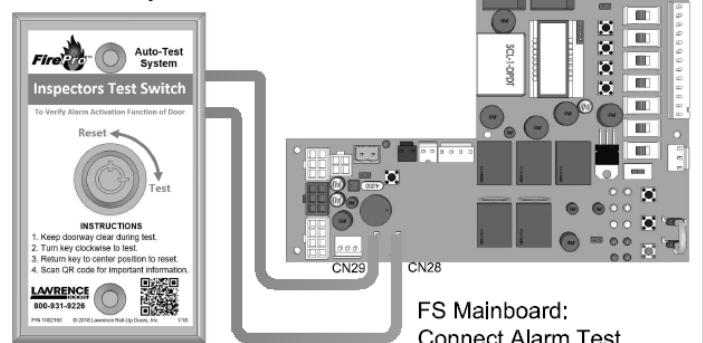


Alarm Test Keyswitch



AR-C Terminal Strip:
Connect Alarm Test Keyswitch as shown

Alarm Test Keyswitch

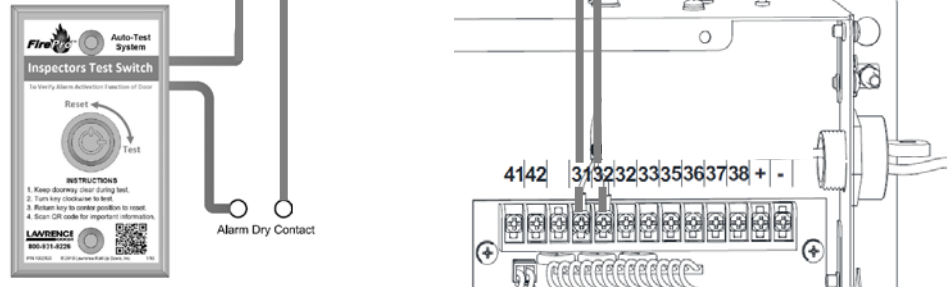


FS Mainboard:
Connect Alarm Test Keyswitch to CN28 & CN29

Model AR-D & AR-D2 Alarm Release

AR-D/D2 Terminal Strip:
Connect Alarm Test Keyswitch as shown
Note: Test keyswitch only tests alarm function – fusible link cable will need to be reconnected to reset door.

Alarm Test Keyswitch



For Automatically Opening Egress Doors & Grilles

Install Test Switch and Connect as Shown Below

Model EGH Auto-Open Operator

