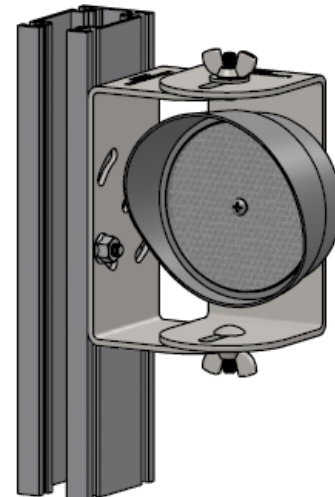
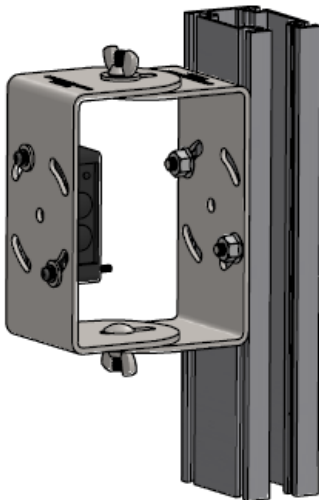


### Installation Instructions

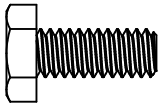
#### IMPORTANT NOTES

- The SRPE sensor has a range of up to 45 ft. BUT it cannot be used as the primary monitored sensing device on doors over 35 ft. wide. *(A monitored sensing edge can be the primary monitored device on any size door.)*
- It is intended for use in indoor or outdoor applications in temperatures between -4 and 131° F.
- When used as the primary monitored sensing device, it must be mounted so the center of the beam (reflector) is 6 inches above the floor. *(See page 4)*
- When the floor is sloped, the center of the beam must still be 6 inches above the sloping floor and the brackets must be rotated as necessary for proper alignment. In some cases, it may be necessary to drill new mounting holes in the guides to allow adequate rotation of the brackets. *(See page 4)*
- If the SRPE is used as a secondary device in addition to a monitored sensing edge, it can be mounted at a higher location, and can be mounted level across a sloping floor.
- This is an ELR sensor and must be connected to the operator as shown in the attached wiring diagram. *(It is to be wired to the ELR connection (8.2~10KΩ) normally used for a monitored sensing edge – not the typical IR photo eye connections. If multiple monitored devices are being connected, a multiple device adapter is needed.)*
- LED indicators show when power is on (red) and when sensor and reflector are properly aligned (yellow). *(Alignment can be adjusted by rotating/pivoting mounting brackets.)*
- A sensing range adjustment knob is under the top cover of the sensor that can be used to strengthen or weaken the infrared signal. *(Factory default setting is MAX and may need to be reduced at shorter distances for proper sensitivity.)*

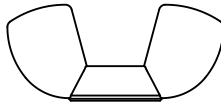


## PARTS LIST

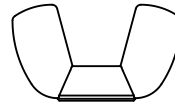
(4) 1/4"-20 x 5/8"  
BOLTS



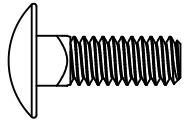
(4) 1/4"-20  
WING NUT



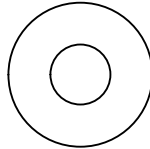
(1) NO. 8  
WING NUT



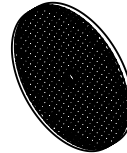
(4) 1/4"-20 x 3/4"  
SQUARE NECK CARRIAGE BOLTS



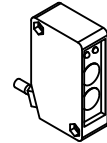
(4) 1/4"  
FLAT WASHER



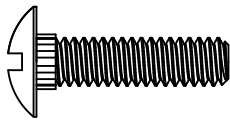
(1) REFLECTOR



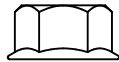
(1) SENSOR  
E-936-S45RRGQ



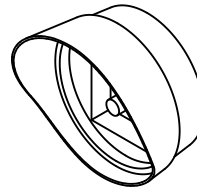
(4) 1/4"-20 x 1"  
RIBBED NECK BOLTS



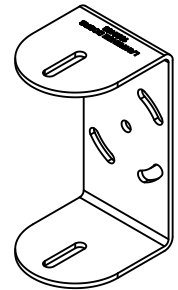
(4) 1/4"-20  
FLANGE NUT



(1) REFLECTOR HOOD



(4) SRPE  
BRACKETS



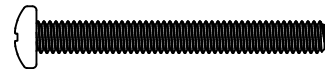
(2) M3 x 35MM  
SCREW



(2) M3  
NUT



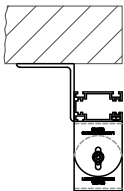
(1) NO. 8 x 1 1/2"  
SCREW



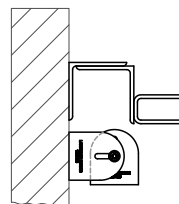
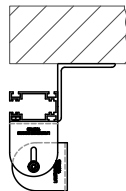
(3) NO. 8  
FLAT WASHER



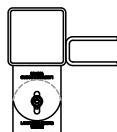
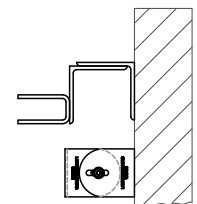
## MOUNTING CONFIGURATIONS



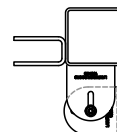
GUIDE MOUNT  
(STANDARD)

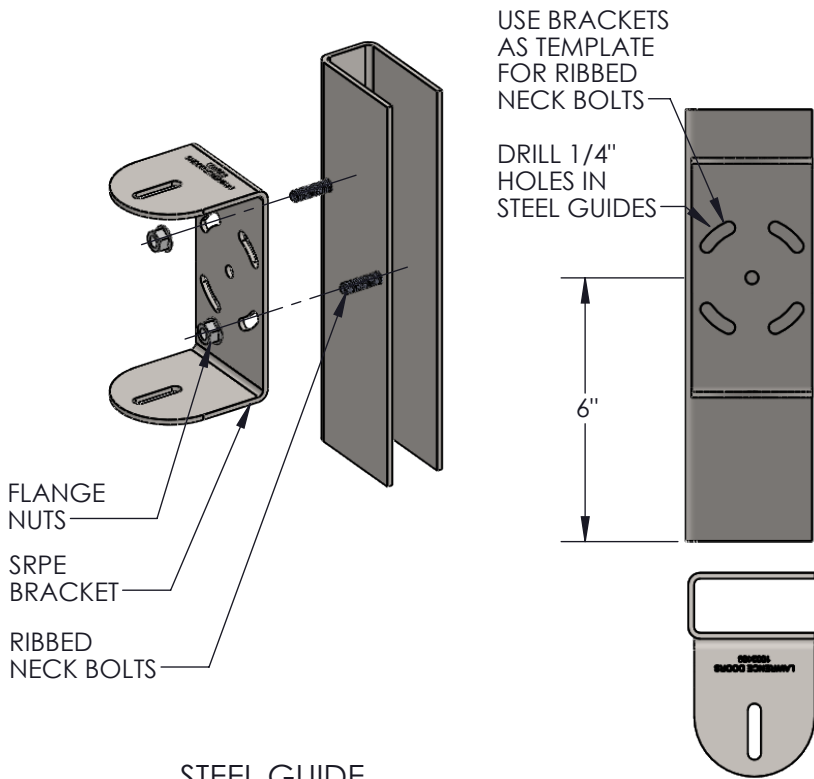


WALL MOUNT

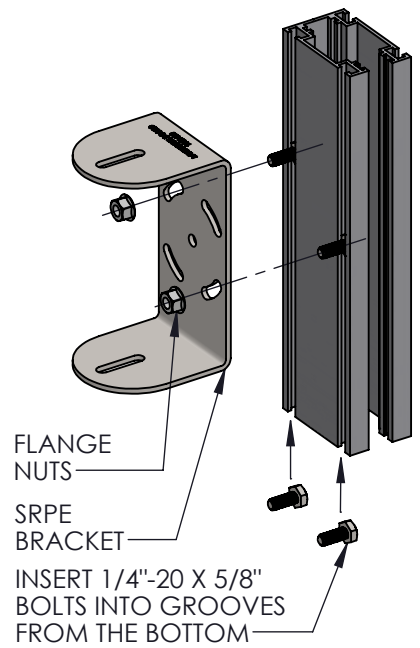


TUBE MOUNT

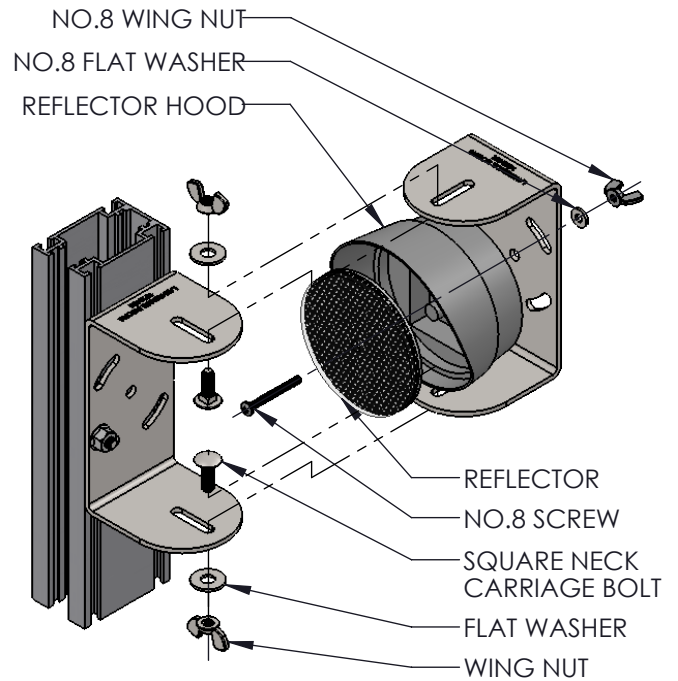
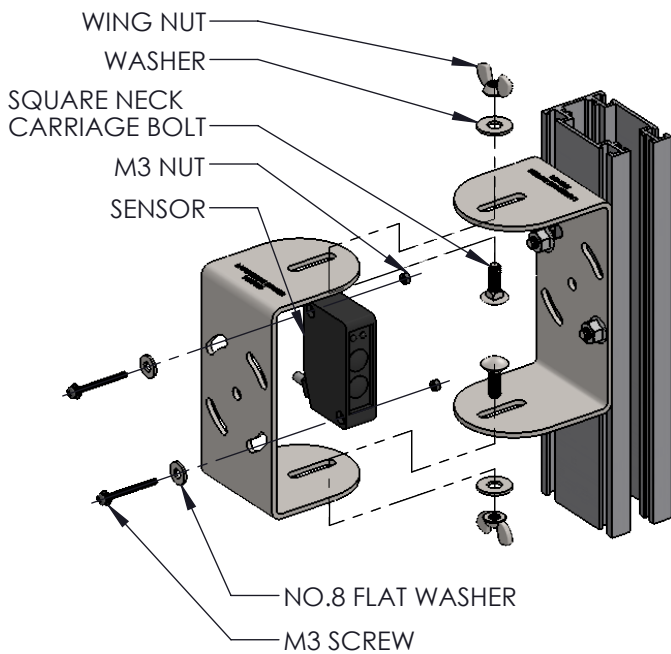




STEEL GUIDE



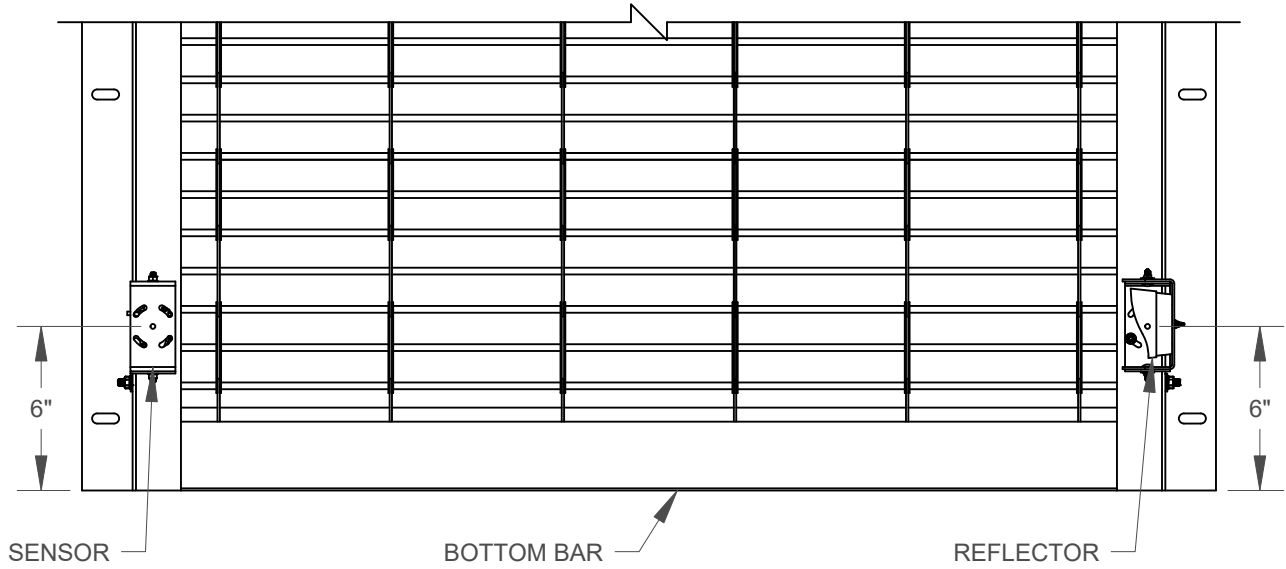
ALUMINUM GRILLE GUIDE



**NOTES:**

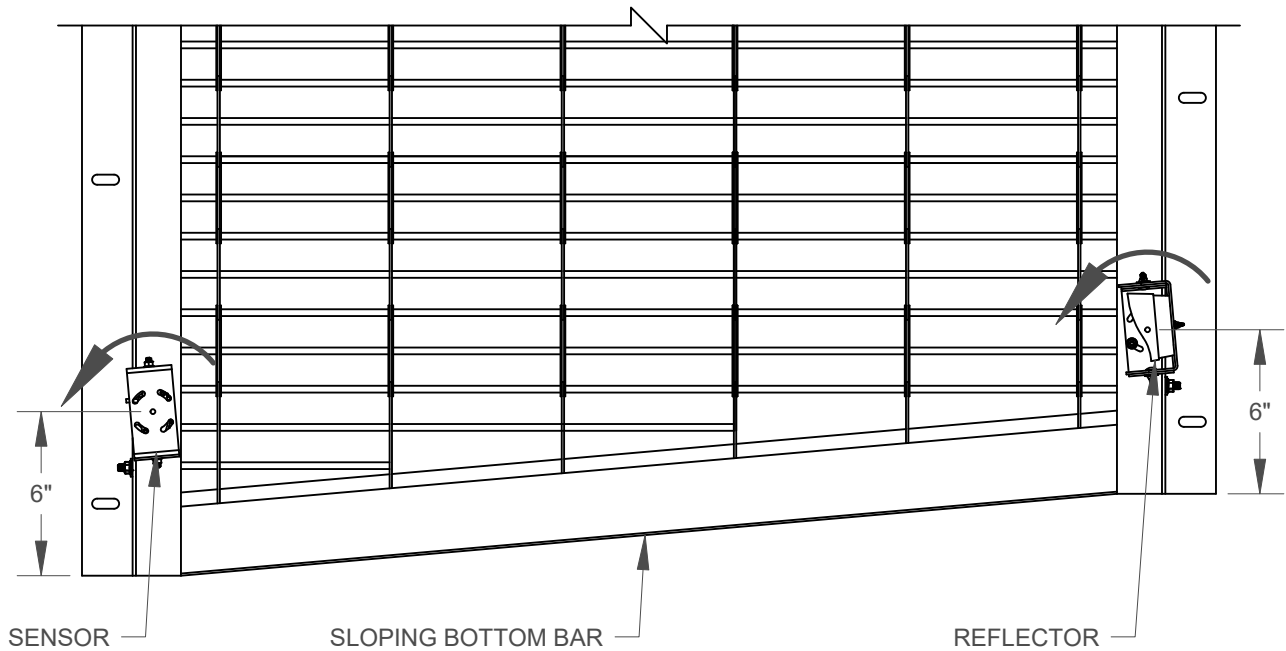
1. Sensor should be located on side of door where operator is located.
2. Mounting for LH operator as shown - RH is opposite.
3. Sensor must be 6" above floor if it is the primary monitored device.

### LEVEL SILL



### SLOPING SILL

ROTATE SENSOR AND REFLECTOR TO MATCH SLOPING SILL

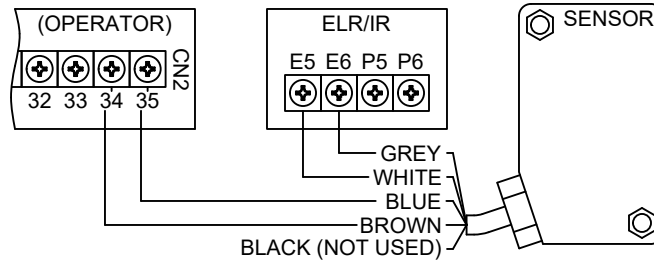


## WIRING DIAGRAMS

This is an ELR sensor and must be wired to the ELR connection normally used for a monitored sensing edge - not the typical IR photo eye connections.\*

**DIAGRAM 1 -  
PRIMARY SENSOR**

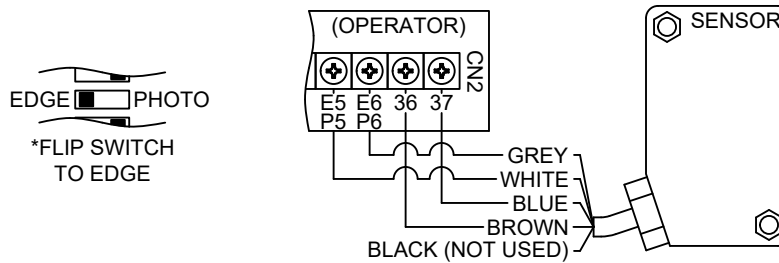
### MG, SG, FG SERIES OPERATORS



NOTE: When sensor is used as the primary or only monitored sensing device, mount 6" above the floor and connect as shown.

**DIAGRAM 2 -  
PRIMARY SENSOR**

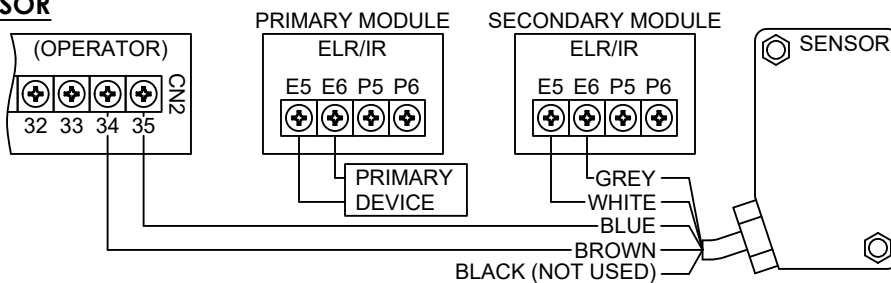
### FS, EG SERIES OPERATORS



NOTE: When sensor is used as the primary or only monitored sensing device, mount 6" above the floor and connect as shown.

**DIAGRAM 3 -  
SECONDARY SENSOR**

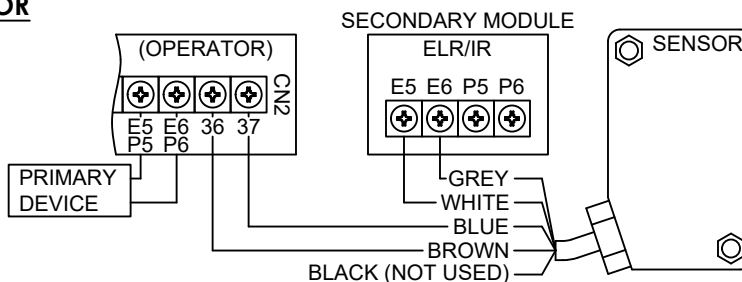
### MG, SG, FG SERIES OPERATORS



NOTE: When sensor is used as a secondary monitored sensing device - with a monitored sensing edge or monitored sensor mounted 6" above the floor as the primary device - an additional ELR/IR module is required and the sensor may be mounted at any appropriate height.

**DIAGRAM 4 -  
SECONDARY SENSOR**

### FS, EG SERIES OPERATORS



NOTE: When sensor is used as a secondary monitored sensing device - with a monitored sensing edge or monitored sensor mounted 6" above the floor as the primary device - an additional ELR/IR module is required and the sensor may be mounted at any appropriate height.

### REFLECTIVE ELR SENSOR LED'S

RED LED	YELLOW LED	STATUS
ON	ON	NORMAL OPERATION - POWER PRESENT AND PROPERLY ALIGNED
ON	OFF	OBSTRUCTION OR ALIGNMENT ISSUE
OFF	OFF	NO POWER, CHECK WIRING