



MODEL HG

ROLL UP GRILLE

H-SERIES

Our Model HG Grille sets the standard for security, visibility, and durability. A great combo for your parking structure and high usage application needs.

FEATURES INCLUDE:

- Up to 100,000 operating cycles
- Multi feature rich options available
- Multiple grille curtain patterns available
- Multiple finishes available
- Approximately 83% open area for maximum air flow
- Up to 45' wide and 32' high*

COMMON APPLICATIONS:

- Parking Structures
- Retail
- Warehouses
- Hospitals

*Consult factory for more details.



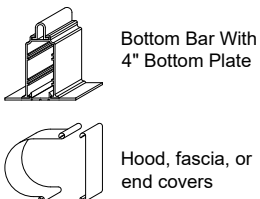
LAWRENCE
DOORS

MADE IN THE USA
SINCE 1925

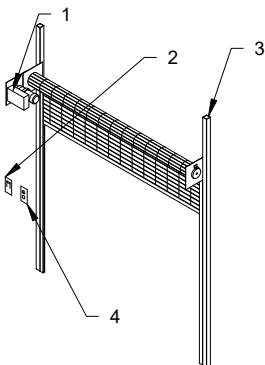
SPECIFICATIONS

- CURTAIN** SL9 straight link pattern with 5/16" horizontal aluminum rods on 2" centers, vertical chains formed from alternating single 1/8" and double 1/16" aluminum 3-hole links on 9" centers, aluminum spacer tubes between end links on alternating rods and between other links on every 6th rod, cotter pins through ends of tubed rods and retaining rings on ends of remaining rods
- BOTTOM BAR GUIDES** Rectangular aluminum extrusion, self-leveling up to 1/2"
- BARREL** Extruded aluminum channel guides with HDPE wear strips and 3/16" min. steel wall angles bolted together and to the wall with 3/8" min. fasteners 24" apart, field adjustable lock bar and curtain stop heights
- BRACKETS** 6 5/8" min. steel pipe and solid steel shaft with sealed precision bearing and torsion spring(s) designed for 50,000 operating cycles (20,000 cycles on grilles over 30 ft. wide, 16 ft. high)
- HOOD** 3/16" min. steel plates with sealed precision bearing on operator side and external tension adjustment wheel
- OPERATION** 24 gauge galvanized steel (*NOT STANDARD - available as an option*)
- LOCKS** Push-up to 12 ft. wide, 10 ft. high, or chain hoist with cast iron reduction gears available on larger sizes
- FINISH** Lever activated double throw-bolt with mortise thumb-turn or cylinder (*NOT STANDARD - available as an option*)
- WARRANTY** Mill finish aluminum curtain, clear anodized aluminum bottom bar and guide channels, shop painted black primer on steel wall angles and brackets
Two year limited warranty (excluding finish)

COMMON OPTIONS



MALL PACKAGE

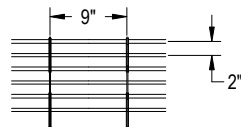


1. Motor operator with internal lock sensor
2. Emergency egress release handle
3. Steel tube supports
4. Two flush mounted keystations

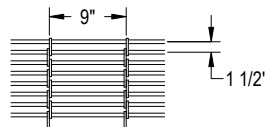
OTHER OPTIONS

- Alternate curtain patterns and link spacings
- Stainless steel curtain (HL9 heavy link pattern)
- Sloping or irregular shaped bottom bars
- Clear, bronze, or other anodized finishes
- Powder coat finish (bottom bar, guides & hood)

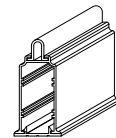
CURTAIN & BOTTOM BAR DETAILS



SL9 Straight Link Curtain

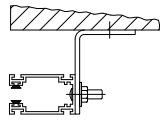


HL9 Heavy Link Curtain*

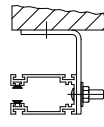


Aluminum Bottom Bar

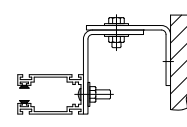
GUIDE DETAILS



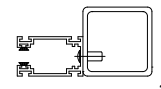
Type 'Z' Guide



Type 'E' Guide

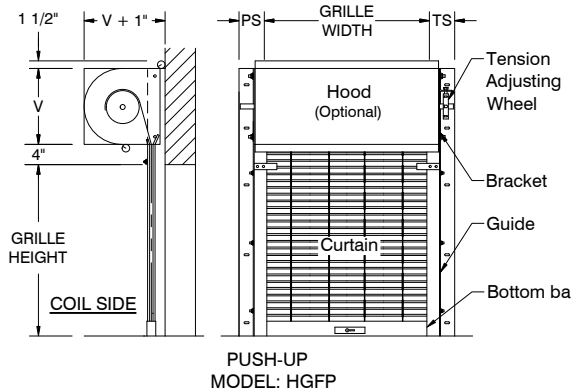


Between Jamb Guide



Tube Mount Guide*

CLEARANCES (typical face mount grille shown)



Clearances shown are for grilles to 26 ft. wide, 14 ft. high
Consult factory for clearances on larger grilles

PS#	CS	AS#	MS#	TS#
6"	8"	6"	6"	6"

- # Add 1/2" for tube mount grilles over 20 ft. wide or over 11 ft. high
- 'V' for grilles to 6 ft. high is 15"
- 'V' for grilles over 6 ft. to 11 ft. high is 17"
- 'V' for grilles over 11 ft. high is 19"

GENERAL NOTES:

Clearances are based upon standard door construction. Reduced clearances may be available. Some options may require additional clearance. Drive side shaft may need to be field cut to fit in clearances shown. Shop drawings for specific applications are available. Consult factory for any information not shown.

* Available as an option