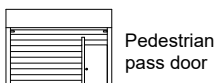
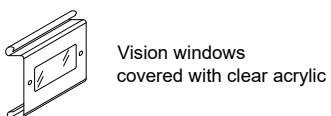


SPECIFICATIONS

MAXIMUM SIZE	20 ft. wide, 16 ft. high
CURTAIN	Interlocking galvanized steel Type 'F' flat slats - 24 gauge to 16 ft. wide, 22 gauge over 16 ft. wide - with endlocks riveted to alternate slats and windlocks riveted to slats on doors over 14 ft. wide
BOTTOM BAR GUIDES	T-shape aluminum extrusion - 3" wide base, 1/8" thick to 16' wide / 4" wide base, 3/16" thick over 16' wide, with vinyl weatherstrip Formed 11 gauge steel U-channel guides and 3/16" steel wall angles bolted together and to wall with 3/8" fasteners 24" apart, with vinyl weatherstrip
BARREL BRACKETS	4 1/2" min. steel pipe and solid steel shaft with sealed bearing and torsion spring(s) designed for 20,000 operating cycles
HOOD OPERATION	3/16" min. steel plates with sealed bearing on operator side and external tension adjustment wheel
LOCKS	24 gauge galvanized steel, with vinyl weather baffle
FINISH	Push-up to 10 ft. wide and 8 ft. high with 24 gauge slats. Chain hoist with cast iron reduction gears on larger sizes
WARRANTY	Slide locks on coil side of bottom bar
	Baked-on primer and grey top coat on slats and hood, mill finish aluminum bottom bar, shop painted black primer on steel guides and brackets
	One year limited warranty (excluding finish)

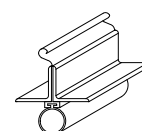
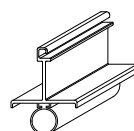
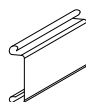
COMMON OPTIONS



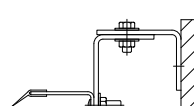
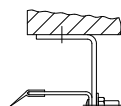
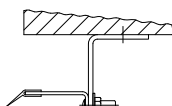
OTHER OPTIONS

- 22 or 20 gauge slats
- Tubular bottom bar with cylinder locks
- Sloping or irregular shaped bottom bars
- Galvanized or powder coat finishes

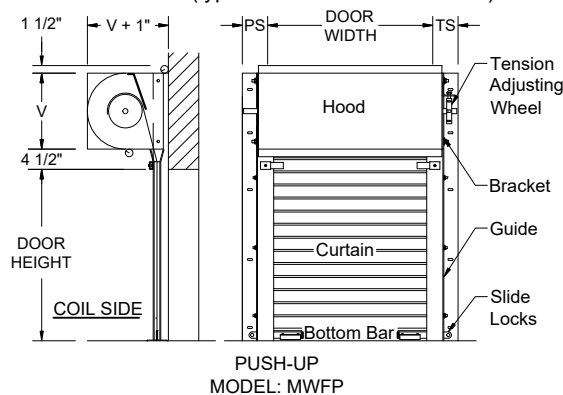
CURTAIN & BOTTOM BAR DETAILS



GUIDE DETAILS



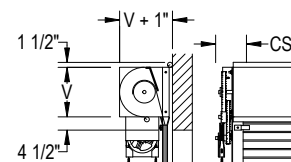
CLEARANCES (typical face mount door shown)



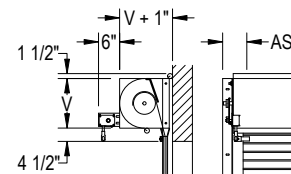
PS	CS	AS	MS	TS
6 1/2"	8 1/4"	6 1/2"	6 1/2"	6 1/2"

Up to 14 ft. wide
 'V' for doors to 12 ft. high is 12"
 'V' for doors over 12 ft. high is 15"
 Over 14 ft. wide
 'V' for doors to 12 ft. high is 15"
 'V' for doors over 12 ft. high is 17"

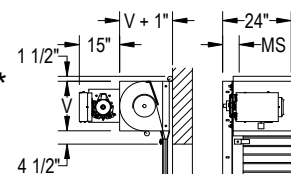
CHAIN HOIST MODEL: MWFC



AWNING CRANK* MODEL: MWFA (To 16' wide, 10' high 150 sq. ft.)



MOTOR OPERATOR* MODEL: MWFM



GENERAL NOTES:

Clearances are based upon standard door construction. Reduced clearances may be available. Some options may require additional clearance. Drive side shaft may need to be field cut to fit in clearances shown. Shop drawings for specific applications are available. Consult factory for any information not shown.

*Available as an option