



Who we are, What we do...

ALUMATEK™

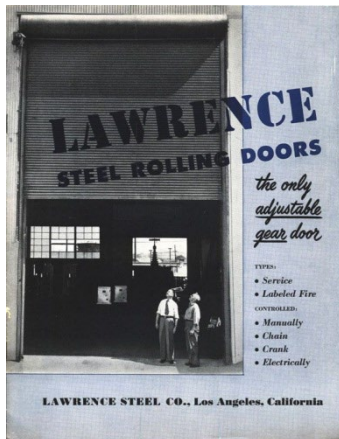


PACIFIC *Rolling Door*™

About Us



- Lawrence Roll-Up Doors started business in 1925 as The Lawrence Glass Company, a Los Angeles manufacturer of steel sash products.
- As the window industry changed and demand for steel sash diminished, the company diversified, became known as The Lawrence Steel Co., and transitioned into a manufacturer of roll-up doors.
- Lawrence was one of the first manufacturers to have a roll-up fire door tested and approved by Underwriters Laboratories... back in 1948.
- Unique designs and signature features have been a Lawrence hallmark throughout the years. Field adjustable gear sets and 1-piece formed U-channel guides were introduced decades ago.





- After eventually becoming The Lawrence Company, it was incorporated in 1988 as Lawrence Roll-Up Doors, Inc.
- Lawrence acquired assets of
 - Criterion Gate in 2000
 - Pacific Rolling Door in 2008
 - AlumaTek in 2010
- Lawrence Roll-Up Doors, Inc. continues to operate as a third-generation family business
- In 2004 Lawrence consolidated all manufacturing operations into a new facility located in Baldwin Park, California and continues to expand operations at that location.

Product Line Overview

- Rolling door and fire door products
- Rolling & side-folding grille and closure products
- High-performance door and grille products
- Egress door and grille products
- Motor operators, controls & accessories
- Retrofit fire door operators
- Folding gate and chain gate products
- Custom design & manufacturing capabilities



Product Series

We offer various duty-cycle rated doors and grilles to meet the needs and budgets of each building owner or tenant . . .

- **"H-Series"** products are suitable for the most demanding conditions of heavy industrial settings, maximum-security environments, and high-frequency usage.
 - Durable **Type 3 flat slats** (2 1/2" x 3/4") 22-18 ga.
 - **20,000** cycle design standard / **50,000** & **100,000** cycle designs available
- **"M-Series"** doors are our most popular products, value engineered for normal commercial applications, fits into lower headroom than H-Series doors, and are comparable to most manufacturers "heavy-duty" products.
 - Compact **Type F flat slats** (2" x 9/16") 24-20 ga. (*Ti slats 2 5/8" x 3/4" on MI insulated doors*)
 - **20,000** cycle design standard (*10,000 cycles on ML fire doors*)
- **"S-Series"** doors and grilles combine quality design and lighter weight construction to offer an economical product for the most cost-conscious buyer.
 - Tight-coiling **Type C semi-curved slats** (3 1/4" x 9/16") 24 ga.
 - **10,000** cycle design standard
- **"C-Series"** products combine door and grille features with more compact designs for service counters and other small openings.

Product Series

Products with more specialized functions & features...

- **“P-Series”** high-performance doors & grilles for very high frequency usage and higher speed operation
 - **500,000** cycle springless design
 - **24** inches per second to open / **12** inches per second to close
 - Model **PT** High Performance Tight-Coil™ Grilles fit into as little as **12” headroom**
- **“Gateway”** egress doors and grilles
 - **Fail-Safe** function automatically opens door/grille upon a loss of power or alarm activation
 - **Fail-Secure** function keeps door/grille closed for up to 30 hours in a power outage, but will open automatically upon alarm, emergency exit button, or secure access by emergency responders
 - **Auto-Reclose** function can be selected to automatically close door/grille after power is restored and alarm is cleared
 - Unique patented design

Service Doors

- Service Doors - the "basic" roll-up doors
- 3 different models to meet varying requirements for most any commercial, industrial, institutional, retail or other application

Model **HD**

To 40' wide, 32' high
(consult factory for larger sizes)

Model **MD**

To 20' wide x 16' high

Model **SD**

To 14' wide x 14' high



Weather-Edge Doors

- Weather-Edge Doors are Service Doors that include a flat slat curtain and perimeter weather seals on the bottom bar, guides and hood
- Provides enhanced resistance to water, dust and air infiltration

Model **HW**

To 40' wide, 32' high
(consult factory for larger sizes)

Model **MW**

To 20' wide x 16' high



Insulated Doors

- Insulated Doors combine flat slats with foam insulation and weather seals on the bottom bar, guides and hood
- Provides maximum climate and temperature control

Model **HI** with Steel Backslat
To 36' wide, 32' high
(consult factory for larger sizes)

Model **MI** with PVC Backslat
To 20' wide x 16' high



Ventilated Doors

- Ventilated Doors are Service Doors with flat slats that are perforated with 1/8" holes on 3/16" staggered centers
- Ends of slats are reinforced to prevent endlock and windlock rivet pull-out
- Provides ventilation and visibility throughout the curtain
- Also available as fully fenestrated doors with 4" wide cut-outs spaced 2" apart in every slat

Perforated Slats



Model **HV**

To 36' wide x 16' high



Fenestrated Slats

High Performance Doors

- Designed for **500,000 cycles** usage
- Operate at **24 inches per second to open / 12 inches per second to close**
- Standard features include:
 - Springless design
 - Aluminum or galvanized steel single slats or insulated double-wall slats
 - Steel guide system with replaceable UHMW wear strips
 - High-efficiency in-line gear drive motor operator (208/230/460v-3ph)
 - Variable speed controller with soft start / stop feature
 - Cycle counter, reclose timer
 - Auxiliary transformer
 - Monitored wireless sensing edge and light curtain

Model **PD** Door

To 30' wide, 16' high

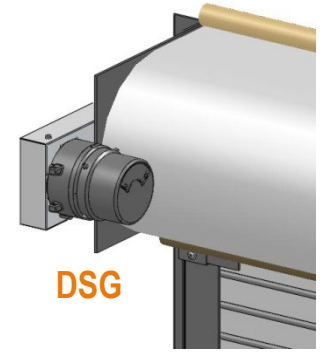
Model **PI** Insulated Door

To 24' wide, 14' high



Fire Doors

- Fire Doors combine Service Door features with fusible link or alarm activated automatic closing to provide state-of-the-art fire protection
- Push-up operation with exclusive “**DSG**” **directional speed governor**, functional only when closing in response to load sensing
- “**Easy-Reset**” or “**Auto-Reset**” chain, crank or motor operation
 - Closes without a loss of spring tension
 - Eliminates traditional mechanical reset
- **UL / c-UL** Classified, **FM** Approved, **CSFM** Listed
- Fire rated up to **4-hours**
- Available with **S-Label** as air leakage rated “Smoke Door”



Model **HL**

To 60' wide, 50' high, 1320 sq. ft.

Model **ML**

To 16' wide x 16' high

Model **SL**

To 14' wide x 14' high



Insulated Fire Doors

- Double-wall slat curtain construction with a mineral wool core combines fire protection with the benefits of thermal insulation and sound control
- **"Easy-Reset"** or **"Auto-Reset"** operation
- **FM Approved, CSFM Listed**
- Fire rated up to **4-hours**
- Available with **S-Label** as air leakage rated "Smoke Door"



Model **IL**
To 44' wide, 24' high



Grilles

- Grilles provide maximum ventilation and visibility while maintaining security
- Commonly required on a variety of exterior and interior openings in retail spaces, office buildings and parking structures
- Choice of curtain patterns
 - **SL9** “Straight Link” – alternating 1/8” single & 1/16” double 3-hole links with rods 2” OC
 - **CL9** “Compact Straight Link” – 1/8” 2-hole links with rods 2” OC
 - **HL9** “Heavy Straight Link” – 3/16” 2-hole links with rods 1 1/2” OC
 - Aluminum (SL9, CL9, HL9) or stainless steel (HL9) construction
 - Links spaced 9” apart (6”, 4 1/2” spacing optional)

Model **HG** Parking Garage Grille

To 45’ wide, 32’ high

(consult factory for larger sizes)

Model **SG** Shopping Center Grille

To 30’ wide, 14’ high, 300 sq. ft.



High-Performance Grilles

- Designed for **500,000 cycles** usage
- Operate at **24 inches per second to open / 12 inches per second to close**
- Standard features:
 - Springless design
 - HL9 “Heavy straight link” curtain pattern with stainless steel spacer tubes between end links
 - Steel guide system with replaceable extruded UHMW wear strips
 - High-efficiency in-line gear drive motor operator (208/230/460v-3ph, or 230v-1ph on 2 HP)
 - Variable speed controller with soft start / stop feature
 - Cycle counter, reclose timer and auxiliary transformer
 - Monitored wireless sensing edge and light curtain

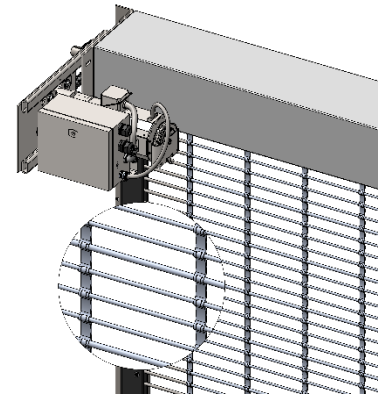
Model **PG**

To 30' wide x 16' high



High-Performance Tight-Coil™ Grilles

- Designed for **500,000 cycles** usage
- Operate at **24 inches per second to open** / **12 inches per second to close**
- **AND...** fit into as little as **12” headroom**
- Standard features:
 - Springless design
 - TL9 curtain pattern with curved aluminum links (*patent pending*)
 - Stainless steel spacer tubes between end links
 - Steel guide system with replaceable extruded UHMW wear strips
 - High-efficiency in-line gear drive motor operator (208/230/460v-3ph, or 230v-1ph on 2 HP)
 - Variable speed controller with soft start / stop feature
 - Cycle counter, reclose timer and auxiliary transformer
 - Monitored photo eye and light curtain



Model **PT**

To 28' wide, 14' high

Rolling Closures

- Similar to SG grilles – but with alternate curtain construction
 - Model **AC** “**Clear Panel**” with clear polycarbonate glazing inserts for visibility, security, and climate control
 - Model **AS** “**Solid Panel**” for strength and security



Model **AC**

To 28' wide, 14' high, 300 sq. ft.

Model **AS**

To 28' wide, 14' high, 300 sq. ft.



Side-Folding Closures

- Operate easily, stack compactly, need no headroom
- Require only a top track – either single or bi-parting
- Slide straight or through simple or compound curves
- Variety of curtain configurations
 - Model **FG** “**Rod & Link**” traditional style grille curtain
 - Model **FO** “**Open Panel**” design with 2 5/16” x 12” openings throughout
 - Model **FC** “**Clear Panel**” with clear polycarbonate glazing inserts for visibility, security, and climate control
 - Model **FS** “**Solid Panel**” for strength and security



Counter Doors & Grilles

- More compact designs resulting in more attractive appearance and reduced clearances
- For use on service counters and small entry openings
- Available with stainless steel counter tops - labeled and non-labeled

Model **CD** Counter Service Doors

To 20' wide, 10' high, 120 sq. ft.



Model **CL** Counter Fire Doors

To 16' wide, 10' high, 120 sq. ft.



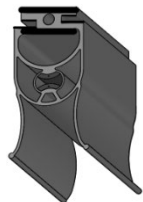
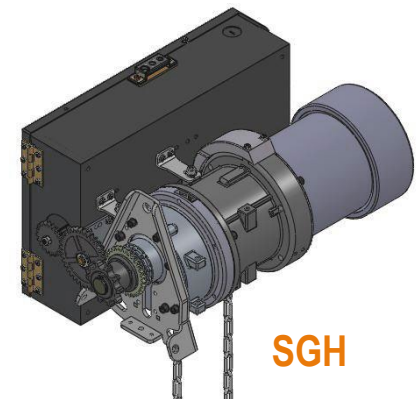
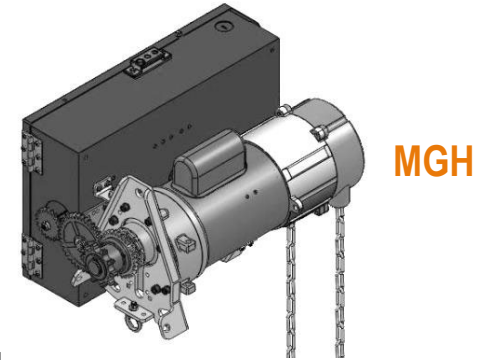
Model **CG** Counter Grilles

To 20' wide, 8' high, 100 sq. ft.



Motor Operators

- High efficiency in-line gear drive operators
- Compact "low-profile" design – no additional clearance above top of door coil is required
- Models for service doors & grilles
 - “MGH” for most doors & grilles in normal usage applications
 - “MGRL” with internal lock sensor for counter doors and most grilles & closures
 - “SGH” for higher frequency usage and larger doors
 - “STK” tubular motor operator (concealed in-barrel)
- Large selection of controls, accessories and options
 - Access control, obstruction sensing, egress functions
 - Wiring and environmental modifications (NEMA 4, 4X, 7/9)
- **PBU** Power Backup Unit & **ELBP** Extended Life Battery Pack



A-2530L-M
Monitored
Sensing
Edge

Fire Door Motor Operators

- High efficiency in-line gear drive operators
- Compact "low-profile" design – no additional clearance above top of door coil is required
- Internal release and governor device
- Models

“**FGH**” *Easy-Reset* / “**FGRL**” with internal lock sensor

“**FS**” *Auto-Reset* / “**FSML**” with internal lock sensor

“**FSH**” *Auto-Reset Plus* with internal battery backup and chain hoist

“**FTS**” *Auto-Reset* tubular motor operator (concealed in-barrel)

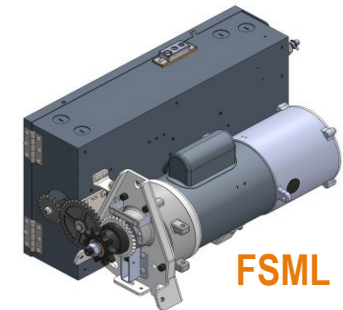
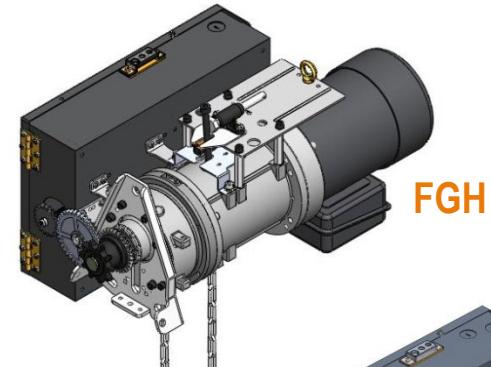
“**R-BBU**” **battery backup** and “**Auto-Test**” options for FS, FSML, and FTS

“**AR-C**” **Auto-Reset conversion** module for FGH / FGRL

- Large selection of controls, accessories and options

- Access control, obstruction sensing, egress functions
- Wiring and environmental modifications (NEMA 4/12, 4X, 7/9)

- **PBU** Power Backup Unit & **ELBP** Extended Life Battery Pack



Retrofit Fire Door Operators

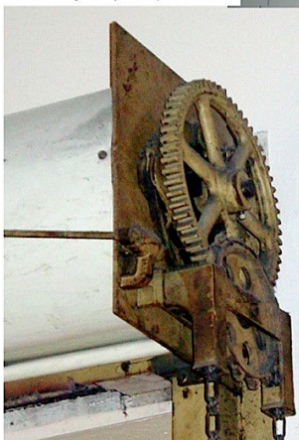
- Repair fire doors with broken operating/closing systems
- Upgrade fire doors that close too quickly
 - Eliminate spring tension release
 - Provide reliable, controlled closing
- Chain, crank or motor operators
 - **“Easy-Reset”** or **“Auto-Reset”** functions
 - **UL Listed / FM Approved**

	LAWRENCE DOORS
(800) 931-9226	www.lawrencedoors.com
RETROFIT ROLLING STEEL DOOR OPERATOR INTENDED FOR INSTALLATION ON ROLLING STEEL TYPE FIRE DOORS	<ul style="list-style-type: none">• OPERATORS MOUNTED LESS THAN 8 FT. ABOVE FLOOR MUST BE COVERED OR GUARDED.• REMOVE COTTER PIN FROM FUSIBLE LINK RELEASE UPON COMPLETION OF INSTALLATION.• FUSIBLE LINK RELEASE MAY BE REPLACED WITH "EASY-RESET PLUS" OR "AUTO-RESET" ALARM RELEASE MODULE - CONSULT FACTORY.

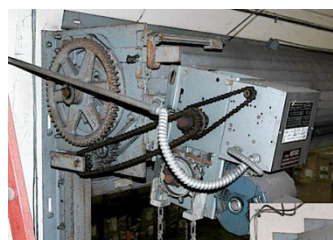
	LAWRENCE DOORS	
LISTED DOOR OPERATOR 54VA E34295	(800) 931-9226 www.lawrencedoors.com	RETROFIT ROLLING STEEL DOOR OPERATOR INTENDED FOR INSTALLATION ON ROLLING STEEL TYPE FIRE DOORS 38ST

Retrofit operators may not be the proper solution to all causes of improperly operating fire doors – Lawrence Doors reserves the right to refuse to sell a retrofit operator in any case where it is deemed to be not appropriate for the intended application

A traditional chain hoist operated fire door with oscillating governor, gear drop out and tension release system (below)



After replacing the traditional operating/closing system with an "Easy-Reset" retrofit fire door chain operator, the door now closes without a loss of spring tension. The door can now be reset by simply reconnecting the fusible link cable and opening the door (above).



Before retrofitting most fire doors have complex systems of gears, governing devices and release mechanisms

After retrofitting the fire door system is a simplified self contained system. Release mechanism and speed control governor are integrated into the motor unit.



Fire Door Alarm Releases

- Failsafe time delayed release device with a constantly energized solenoid
- Causes a fire door to close upon a loss of power or an initiation signal from local detector(s) or fire alarm control panel.
- Model **AR-D**
 - Listed by UL and California State Fire Marshal (CSFM)
 - UL864 (9th edition) compliant device without the need for battery back-up
 - 115 VAC, 24 VAC or 24 VDC
 - Time delayed (approx. 10 seconds) release upon initiation or power loss
 - External test button with power & door open indicator lights
- Model **AR-D2**
 - Includes features of the AR-D *plus* an internal battery back-up system for up to 7 days support of optional detectors and audible, visible or voice warning devices powered by it (4 devices maximum)



LT Folding Gates

- Performance-designed with affordability in mind
- Standard construction features
 - Full length diagonal steel lattice channels in a diamond pattern
 - Riveted together through spacers for light weight and smooth operation
 - Rolling on floor casters
- Single or bi-parting
- Pivots out of the way when open
- Most popular choice for loading dock and pedestrian control applications
- Available as **LTP free-standing portable** version with integral rolling stands



EG Folding Gates

- Value engineered to offer a balance between security and economy
- Standard construction features
 - Single steel channels
 - Alternating steel flat bars
 - Connected with single rows of steel lattice bars
 - Formed steel glides for carefree operation
- Bottom rolling with top guide
- Single or bi-parting
- Option to pivot
- Commonly utilized on storefronts and other moderate security applications



DC Folding Gates

- Designed for maximum durability and security
- Standard construction features
 - Double steel channels riveted together
 - Connected with double rows of steel lattice bars
 - Traveling on nylon bearings and washers to operate with a minimum of effort
 - Leading and trailing edges are steel box shaped sections
- Bottom rolling with top guide
- Single or bi-parting
- Option to pivot
- Often selected for schools, banks, and other at-risk locations
- Available as a **DCP free-standing portable** version with integral rolling stands



Chain Gates

- Alternative design to side-folding closures & folding gates
- Standard construction features (Model **VA**)
 - Horizontal & vertical rows of 2/0 straight-link steel chain
 - Woven into pattern of 8" x 8" squares
 - Leading and trailing edges are steel angles
 - Cast iron housing with integrated self-latching handle
- Extruded aluminum top track with non-metallic double-wheeled rollers
- Single or bi-parting
- Provides area confinement in commercial & industrial settings
- Also available in a version for use on truck bodies (Model **VW**)

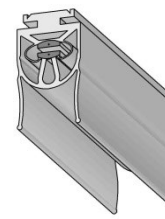
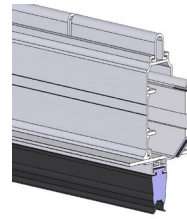
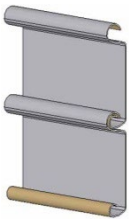
Model **VW**



Model **VA**

Replacement Parts

- Flat, curved, perforated and insulated slats – or complete curtains
Many profiles interchange with other manufacturers – consult factory*
- Grille curtains or sections with 2- or 3-hole links, 1½” or 2” OC rods
- 1-piece aluminum, double steel angle or tubular bottom bars
- Replacement barrels, guides, hoods, gears and other components
- Motor operators, controls and accessories, sensing edges

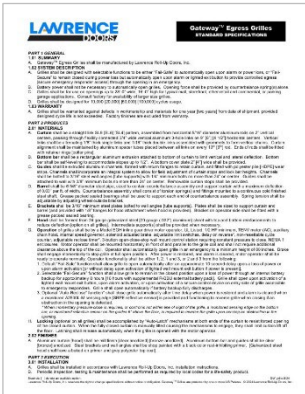


- Parts for **Lawrence and Pacific Rolling Door** fire doors
*Per NFPA-80 repair parts must be obtained from the original door manufacturer
(with the exception of retrofit fire door operators)*
- Parts for **AlumaTek** rolling & side-folding products

**Not for use on other manufacturers fire rated or wind rated doors*

Sales & Technical Support

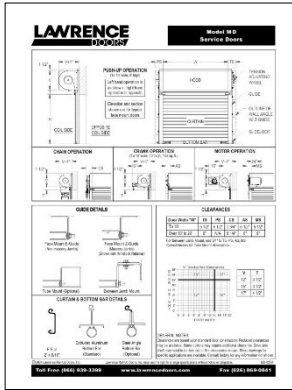
www.lawrencedoors.com



Specifications



Brochures



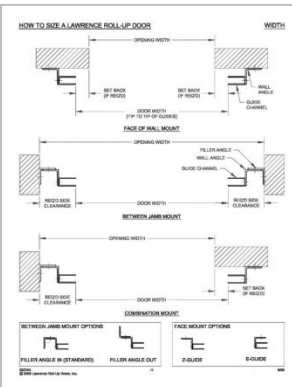
Details & Clearances

Model	B. Fire Door	H-C Fire Door	A. Insulated Fire Door	LJ. Double Fire Door
Application	Interior use, door code	High fire, exterior	Interior and exterior	Interior and exterior
Construction	1 1/2" thick, 20 gauge galvanized steel, 20 gauge galvanized steel, 1 1/2" thick, 20 gauge galvanized steel	1 1/2" thick, 20 gauge galvanized steel, 20 gauge galvanized steel, 1 1/2" thick, 20 gauge galvanized steel	2 1/2" thick, 20 gauge galvanized steel, 20 gauge galvanized steel, 2 1/2" thick, 20 gauge galvanized steel	2 1/2" thick, 20 gauge galvanized steel, 20 gauge galvanized steel, 2 1/2" thick, 20 gauge galvanized steel
Weight	25 lbs	40 lbs	55 lbs	70 lbs
Height	80" to 96"	80" to 96"	80" to 96"	80" to 96"
Width	36" to 48"	36" to 48"	36" to 48"	36" to 48"
Door Type	Single leaf, 1 1/2" thick, 20 gauge galvanized steel	Single leaf, 1 1/2" thick, 20 gauge galvanized steel	Double leaf, 1 1/2" thick, 20 gauge galvanized steel	Double leaf, 1 1/2" thick, 20 gauge galvanized steel
Installation	See installation manual	See installation manual	See installation manual	See installation manual
Clearance	3/4" (19mm)	3/4" (19mm)	3/4" (19mm)	3/4" (19mm)
Weight	See installation manual	See installation manual	See installation manual	See installation manual
Rating	See installation manual	See installation manual	See installation manual	See installation manual
Finish	See installation manual	See installation manual	See installation manual	See installation manual
Packaging	See installation manual	See installation manual	See installation manual	See installation manual
Notes	See installation manual	See installation manual	See installation manual	See installation manual
Options	See installation manual	See installation manual	See installation manual	See installation manual
Lead Time	See installation manual	See installation manual	See installation manual	See installation manual

Model Comparisons



Gallery



Technical Support

Thank You!



e-Intro 10/24

Lawrence Roll-Up Doors, Inc.

Call (866) 939-3399

Fax (626) 869-0841

Email info@lawrencedoors.com