

# MODEL MD

## STOCK SERVICE DOORS

### M-SERIES

You can have one picked up or shipped as soon as the same day you order it! (Subject To Availability)

#### FEATURES INCLUDE:

- Up to 20,000 operating cycles
- Push up operation on smaller sizes; Manual chain hoist operation on larger size doors.
- Low compact flat slat design
- Aluminum bottom bar
- Factory baked on primer gray finish
- Left Hand operation standard (Right Hand operation optional)

#### COMMON APPLICATIONS:

- Auto-Dealerships
- Warehouses
- Mechanic Shops
- Trash Rooms
- Retail



**LAWRENCE**  
DOORS

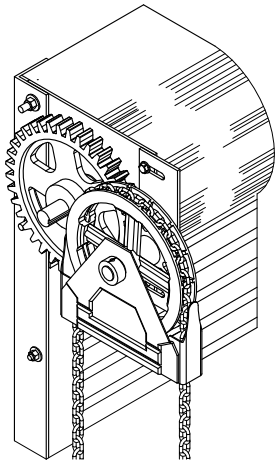
SCAN  
FOR MORE  
INFORMATION



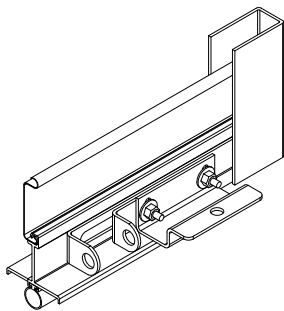
**SPECIFICATIONS**

|                    |  |
|--------------------|--|
| <b>STOCK SIZES</b> | 8 ft. x 8 ft. 8 ft. x 10 ft. 10 ft. x 10 ft. 10 ft. x 12 ft. 12 ft. x 10 ft. 12 ft. x 12 ft. 12 ft. x 14 ft.                                 |
| <b>CURTAIN</b>     | Interlocking 24 gauge galvanized steel Type 'F' flat slats with endlocks riveted to alternate slats, designed to withstand a 20 PSF windload |
| <b>BOTTOM BAR</b>  | T-shape aluminum extrusion with vinyl weatherstrip   |
| <b>GUIDES</b>      | Formed 11 gauge steel U-channel guides and 3/16" steel wall angles bolted together and to wall with 3/8" fasteners 24" apart                 |
| <b>BARREL</b>      | 4 1/2" min. steel pipe and solid steel shaft with sealed bearing and torsion spring(s) designed for 20,000 operating cycles                  |
| <b>BRACKETS</b>    | 3/16" min. steel plates with sealed bearing on operator side and external tension adjustment wheel   |
| <b>HOOD</b>        | 24 gauge galvanized steel  |
| <b>OPERATION</b>   | Push-up to 10 ft. wide, 8 ft. high, chain hoist with cast iron reduction gears on larger sizes   |
| <b>LOCKS</b>       | Slide locks on coil side or opposite coil side of bottom bar   |
| <b>FINISH</b>      | Baked-on primer and grey top coat on slats and hood, mill finish aluminum bottom bar, shop painted black primer on guides and brackets       |
| <b>WARRANTY</b>    | One year limited warranty (excluding finish)   |

**COMMON FEATURES**



CHAIN HOIST WITH CAST IRON GEARS

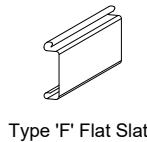


SLIDELOCKS & VINYL WEATHERSTRIP

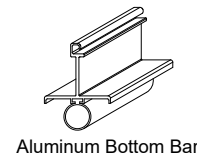
**AVAILABLE OPTIONS**

- GUIDE WEATHERSTIP
- MOTOR OPERATION
- SENSING EDGE

**CURTAIN & BOTTOM BAR DETAILS**

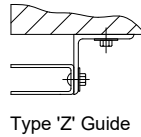


Type 'F' Flat Slat

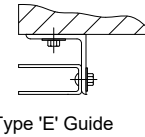


Aluminum Bottom Bar

**GUIDE DETAILS**

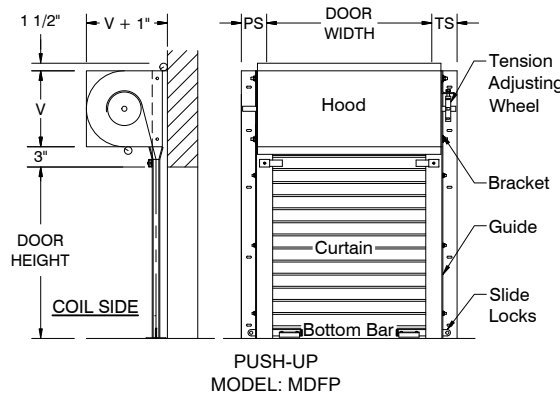


Type 'Z' Guide



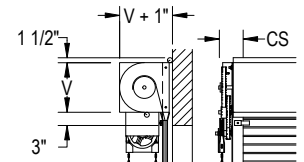
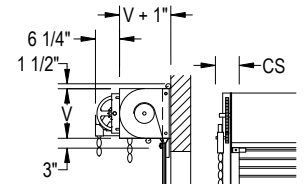
Type 'E' Guide

**CLEARANCES**



CHAIN HOIST MODEL: MDFC (TO 12' HIGH)

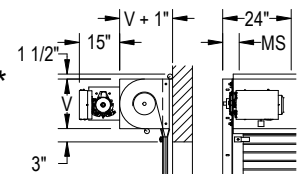
CHAIN HOIST MODEL: MDFC (OVER 12' HIGH)



|    |    |    |    |
|----|----|----|----|
| PS | CS | MS | TS |
| 6" | 8" | 7" | 7" |

'V' for doors to 12 ft. high is 12"  
'V' for doors over 12 ft. high is 15"

MOTOR OPERATOR\* MODEL: MDFM



**GENERAL NOTES:**

Clearances are based upon standard door construction. Reduced clearances may be available. Some options may require additional clearance. Shop drawings for specific applications are available. Consult factory for any information not shown.

\* Available as an option