

LAWRENCE

DOORS



MATERIALS & FINISHES

Add your personal touch and make your door stand out with our customizable materials and finish options.



ROLL UP DOORS – STANDARD FINISH



Grey*



Off-White*

- Only on SD & MD Models-

FIRE DOORS STANDARD FINISH



Grey*

ROLL UP GRILLES – STANDARD FINISH



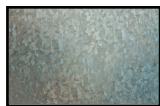
Mill Finish Aluminum

ROLLING AND SIDE FOLDING CLOSURES STANDARD FINISH



Clear Anodized Aluminum

LT GATE - FINISHES



Hot Dipped Galvanized - Standard



RAL Custom Powder Coat Colors - Optional



Black Prime Painted Finish - Optional

ROLL UP DOORS – OPTIONAL FINISHES



RAL Custom Powder Coat Colors



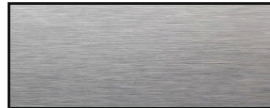
Bright White*



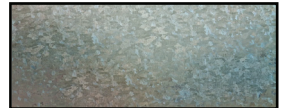
Clear Anodized Aluminum



Dark Bronze Anodized Aluminum

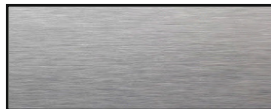


Stainless Steel



Hot Dipped Galvanized - Hardware Option Only-

FIRE DOORS OPTIONAL FINISHES



Stainless Steel



RAL Custom Powder Coat Colors

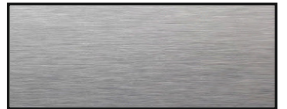
ROLL UP GRILLES – OPTIONAL FINISHES



Clear Anodized Aluminum



Dark Bronze Anodized Aluminum



Stainless Steel

ROLLING AND SIDE FOLDING CLOSURES OPTIONAL FINISHES



Dark Bronze Anodized Aluminum

EG & DC GATES - FINISHES



Black Prime Painted Finish - Standard



RAL Custom Powder Coat Colors - Optional

*Galvanized steel with baked on primer and polyester top coat

(Door Hardware - Standard Prime Painted Black Finish)

FOR MORE INFORMATION, CONTACT US TODAY!

(800) 931-9478 • QUOTEME@LAWRENCEDOORS.COM

VISIT OUR WEBSITE AT LAWRENCEDOORS.COM

SCAN
ME

